

PERMAVOID 85S

Permavoid 85S is a strong lightweight hollow subbase system, able to support sports, landscaped and paved surfaces on rooftops, podium decks and in green infrastructure at ground level. In combination with the Permavoid Capillary Cylinders

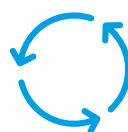
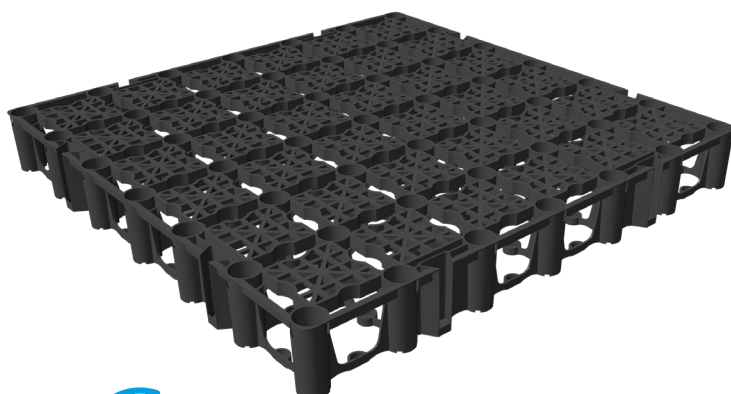
the system can be used in water sensitive urban design, enabling stormwater attenuation, retention, infiltration, conveyance and natural capillary (plant) irrigation without the use of energy, pumps or in-building water storage tanks.

Applications

- Blue-Green roofs
- Podium Decks
- Sports
- Equestrian
- Urban Trees
- Bicycle paths
- Landscaped SUDS and lightweight rigid subbase replacement

GENERAL

Brand	Permavoid
Product name	Permavoid 85s
Item nr.	3530002 (no capillary cones), 3530003 (12 capillary cones a panel), 3530004 (24 capillary cones a panel)
Color	Black
Material	Polypropylene (CoPo)
Material description	Frost and resistant, hydrofoob, inert, acid and hydrocarbon resistant, impervious to bacterial and fungal growth
Recycled/Virgin	Recycled
Lifespan	> 50 years



For capillary irrigation PDS-3B will be added.

PERMAVOID 85S

SIZE

Size	710 x 710 x 85 mm (l x w x h), approx. 0,5 m ² , +/- 1%
Weight	approx. 3 kg
Color	Black
Coefficient of Linear Thermal Expansion	0,0004 - 0,0008 m/m K
Volumetric void ratio	> 93%
Perforated surface ratio	> 65%
Compressive strength (safe design strength)	600 kN/m ²
Short-term vertical deflection	n.a.
Necessary ancillaries (included)	Permaties: each side of the unit is tied to the next unit with 2 conical PermaTies to create a stable raft. Removable, reusable.
Optional Ancillaries	Capillary Cylinders (3520001) PermaLock (3510005)

PACKAGING

Packaging	Prefab panels with 6 units in a 2 x 3 configuration, with PermaTies factory installed. 2.130 x 1.420 x 85 mm (l x w x h), 3 m ²
Pallet size	2.130 x 1.420 x 1.150 mm (l x w x h)
Pallet capacity	12 panels x 6 units, 72 units, 36m ²
Pallet total weight	240 kg
Storage instruction	Prevent exposure to direct sunlight during long term storage
HS Code	39269097

Notes

Permavoid Ltd. will not be held liable if our products are used in a manner inconsistent with our requirements, standards or the purposes indicated in the standards. Standards can be obtained at www.permavoid.com. This document is not contractual. With our constant concern for improvements, the information this document contains and the products presented may be modified without notice. The latest version of this document can be obtained at www.permavoid.com. Please get in touch with us if you require any further documentation or information.

Data Sheet: PDS-3A
Last revised: January 2021

Permavoid Head Office

Kattenburgerstraat 5

1018 JA | Amsterdam | The Netherlands

www.permavoid.com | info@permavoid.co.uk

Permavoid Ltd. is part of the Polypipe Group.



Bowman
Construction
Supply Inc.



Quick
Supply Co.



Cascade
GEOSYNTHETICS

LOCATIONS & CONTACT INFO

ASP ENTERPRISES

aspent.com
salesasp@aspent.com

BOWMAN CONSTRUCTION SUPPLY

bowmanconstructionsupply.com
salesbcs@bowmanconstructionsupply.com

QUICK SUPPLY CO.

quicksupplyco.com
salesquick@quicksupplyco.com

CASCADE GEOSYNTHETICS

cascadegeos.com
salescascade@cascadegeos.com

St. Louis, MO 636.343.4357
Omaha, NE 402.861.8579
Kansas City, MO 816.554.1191
Wichita, KS 316.393.1554

Denver, CO 303.696.8960
Colorado Springs, CO 719.257.7840
Loveland, CO 970.535.0863

Des Moines, IA
515.289.1271

Portland, OR
971.339.1020

SOLUTIONS WE SUPPLY

GEOSYNTHETICS

Filter Fabrics

Stabilization Fabrics

Geogrids

- Road Grids
- Wall Grids
- Slope Stabilization

Specialty Fabrics

Composite Geomembranes

- GCLs, PVC, HDPE, LLDPE, EPDM, Granular Bentonite

SEDIMENT CONTROL

Inlet Protection

- Grated Inlet, Curb Inlet, Area Inlet Protection

Ditch Checks

- Triangle Silt Dike
- GeoRidge

Perimeter Protection

- High and Low-Porosity Silt Fence, Straw Wattles, Silt Socks
- Safety Fence

Flocculants & Water Treatment

- Polymer-Based & Natural Flocculants

Sediment Basin Skimmers

Dewatering Bags

Trackout Control

- FODS
- Rumble Grates

Turbidity Curtains

EROSION CONTROL

Basic Hydraulically Applied Mulches

- Wood
- Paper
- Blends
- Straw

High-Performance Hydraulically

Applied Products

- BFM
- FGM
- Additives & Tackifiers

Temporary Erosion Control Blankets

- Coir & Jute Mat/Nettings
- Short-Term ECBs
- Extended-Term ECBs

Permanent Erosion Control Blankets

- Turf Reinforcement Mats
- HP-TRMs
- Anchor Reinforced Vegetation System

Structural BMPs

- Transition Mats
- Geoweb Cellular Confinement
- Composite Vegetated Armor System
- Flex MSE Vegetated Wall System
- Articulated Concrete Block
- Gabions
- Grout-Filled Geotextile Mats

Vegetation Establishment

- Native Seed & Turf Seed
- Fertilizers
- Organic Soil Additives
- Stratavault Soil Cells

STORMWATER MANAGEMENT

Water Quality

- Inlet Filter Boxes
- Pre-Treatment Chamber
- Nutrient Separating Baffle Boxes
- High-Flow Biofiltration Media
- Hydrodynamic Separators
- Stratavault

Water Quantity

- Modular Underground Storage Systems
- Chamber Detention Systems

Drainage

- HDPE Swale Liner
- Pipe & Fittings
- Drainage Composites
- Strip Drain

Inlet Structures

- PVC
- Drain Basins, In-Line Drains
- Landscape

Permeable Pavers

- Permeable Articulating Concrete Block
- Grass Pavers
- Gravel Pavers
- Concrete Pavers

SPECIALTY

Natural & Synthetic Coir Fiber Logs

Vegetated Reinforced Soil Slopes

Soil Anchors

Root Barrier System

AquaBlok

Muscle Wall

We are full line distributors of construction materials for all project types. Contact us for assistance with a project. From specification and development to installation and completion, we're here to help with all of your site solution needs.

**GEOSYNTHETICS | EROSION CONTROL | STORMWATER MANAGEMENT
SEDIMENT CONTROL | REVEGETATION & SOIL AMENDMENTS**