

# MATERIAL PROPERTY DATA SHEET

# FALCON PINS™

# HC-8

Patent Pending

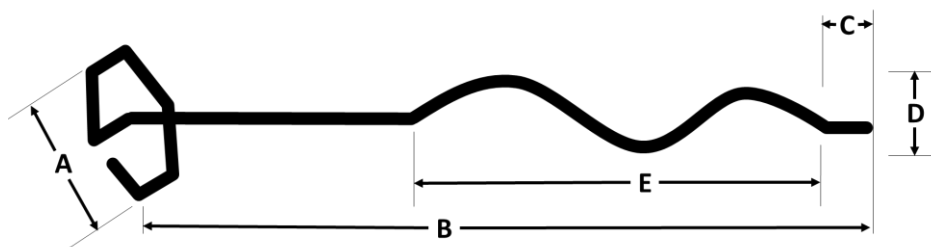
## Description

Falcon Pins by Western Green are a patent-pending fastener designed to secure erosion control mattings in place with a pull-out strength up to 10 x that of sod staples. The Falcon HC-8 has a unique 'corkscrew' coil configuration using a 0.16"(4.0 mm) diameter wire. HC-8 is designed for soft, clayey soils. With the 'hex head' shape, the HC-8 pins are easy to install using a hand drill with a 1.5" socket attachment. For faster and easier installation, a custom driving socket is available. HC-8 pins are galvanized, made in the USA and can be installed on ARRA projects.



## Dimensions and Performance

HC-8 Dimensions – in (cm)	
Hex Diameter (A)	1.5 (3.8)
Twist Pin Length (B)	8.0 (20)
Tail Length (C)	0.5 (1.3)
Coil Diameter (D)	1.0 (2.6)
Coil Length (E)	3.0 (7.6)

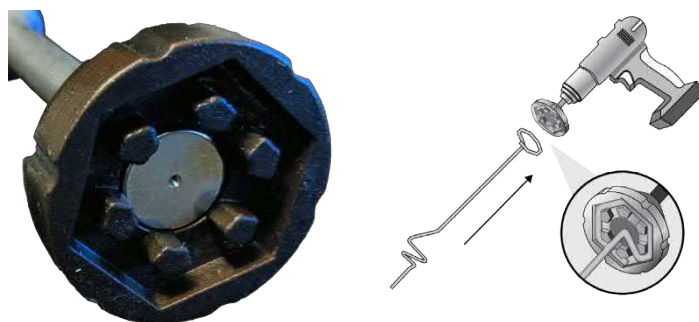


HC-8 Performance	
Pullout Resistance	Up to 170 lb (750 N)
* Pullout resistance will vary based on soil type and conditions.	

Falcon Hex Pins show superior pullout resistance compared to standard fasteners. Pullout resistance will vary based on soil type. A pullout test should be conducted to verify in-situ stability. A minimum 20 lbs of pullout resistance is required for use with rolled erosion control products. HC-8 pins are optimized for clayey type sols.

## Installation

- HC-8 pins can be installed with an 'off-the-shelf' 1.5" socket. A custom socket for improved performance is shown to the right.
- Ensure the tip is pushed below the TRM before drilling into ground to avoid entanglement.
- Ensure no debris is on the Falcon Pin before drilling. Debris may cause TRM fibers to entangle
- With light-weight nets, keep tension on blanket.



Disclaimer: The information contained herein may represent product index data, performance ratings, bench scale testing or other material utility quantifications. Each representation may have unique utility and limitations. Every effort has been made to ensure accuracy; however, no warranty is claimed, and no liability shall be assumed by Western Green or its affiliates regarding the completeness, accuracy, or fitness of these values for any particular application or interpretation. While testing methods are provided for reference, values shown may be derived from interpolation or adjustment to be representative of intended use. For further information, please feel free to contact Western Green.

©2021, Falcon Anchors is a registered trademark from Western Green. Certain products and/or applications described or illustrated herein are protected under one or more U.S. patents. Other U.S. patents are pending, and certain foreign patents and patent applications may also exist. Trademark rights also apply as indicated herein. Final determination of the suitability of any information or material for the use contemplated, and its manner of use, is the sole responsibility of the user. Printed in the U.S.A.



FCN\_MPDS\_HC8\_11-21





## DISTRIBUTED BY:

ASP Enterprises, Quick Supply Co., Bowman Construction Supply & Cascade Geosynthetics are sister companies that serve customers from the Midwest, across the Rocky Mountains to the Pacific Northwest. Together we supply customers with a variety of environmental construction materials including erosion and sediment control, geosynthetics, stormwater management, drainage products, hardscapes and outdoor living, revegetation and soil amendments, waterproofing solutions and more.



We are full line distributors of environmental construction materials for all project types. Contact us for assistance with a project or a quote on products. From specification recommendations and project development to installation and completion, we're here to help with all of your site solution needs. Our warehouses are stocked with readily available inventory and we offer same and next-day deliveries.

### ASP ENTERPRISES

[aspent.com](http://aspent.com)

[salesasp@aspent.com](mailto:salesasp@aspent.com)

#### ST. LOUIS

1099 Cassens Industrial Ct.  
St. Louis, MO 63026  
636-343-4357

#### KANSAS CITY

5301 E 59th St.  
Kansas City, MO 64130  
816-554-1191

#### OMAHA

15263 Cooper St.  
Omaha, NE 68138  
402-861-8579

#### WICHITA

316-393-1554

#### WENTZVILLE

1906 E Service Rd. HWY 61 N  
Wentzville, MO 63385  
636-445-9090

### QUICK SUPPLY CO.

[quicksupplyco.com](http://quicksupplyco.com)

[salesquick@quicksupplyco.com](mailto:salesquick@quicksupplyco.com)

#### DES MOINES

6620 NW Toni Dr.  
Des Moines, IA 50313  
515-289-1271

### BOWMAN CONSTRUCTION SUPPLY

[bowmanconstructionsupply.com](http://bowmanconstructionsupply.com)

[salesbcs@bowmanconstructionsupply.com](mailto:salesbcs@bowmanconstructionsupply.com)

#### DENVER

10801 E. 54th Ave.  
Denver, CO 80239  
303-696-8960

#### COLORADO SPRINGS

2445 Wayside Ct.  
Colorado Springs, CO 80915  
719-257-7840

#### LOVELAND

4495 Woods Ave.  
Loveland, CO 80538  
970-535-0863

### CASCADE GEOSYNTHETICS

[cascadageos.com](http://cascadageos.com)

[salescascade@cascadageos.com](mailto:salescascade@cascadageos.com)

#### PORTLAND

3610 N. Suttle Rd. Bldg B  
Portland, OR 97217  
971-339-1020

#### SALT LAKE CITY

425 N. Neil Armstrong Rd.  
Salt Lake City, UT 84116  
435-276-0820

**GEOSYNTHETICS | EROSION CONTROL | STORMWATER MANAGEMENT  
REVEGETATION & SOIL AMENDMENTS | SEDIMENT CONTROL | HARDSCAPES**