

FALCON ANCHORS™

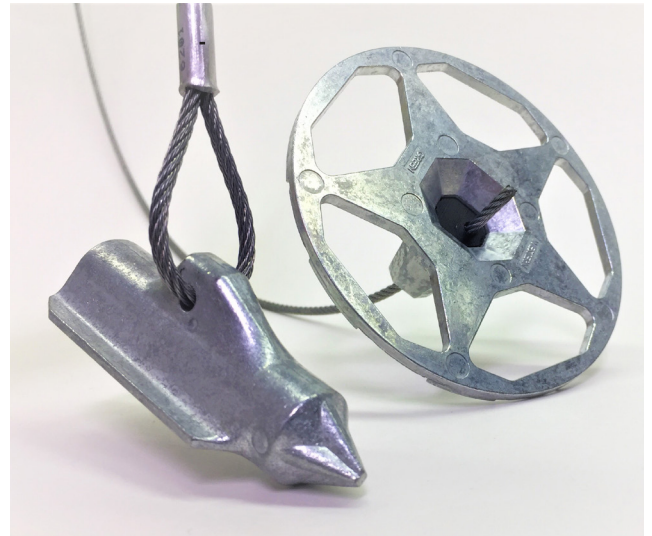
Advancing Anchoring with Falcon Anchors by Western Green

Falcon Anchors by Western Green take the best of existing anchor system technology and builds improved anchoring products that are a true **FORCE of NATURE**. Falcon Anchors feature improved quality, performance, and system installation, resulting in advanced anchored products that perform to the highest tested technologies.

Falcon Anchors grip and dig into the soil for a streamlined installation and performance with high factor of safety.

Casted and assembled in the USA, and with quicker load-locking capabilities, Falcon Anchors can be in-place controlling against nature's forces from day one. When combined with one of Western Green's High-performance Turf Reinforcement Mats, the result is a completely integrated armoring system that can be curated to your specific design parameters.

Start specifying with our complete line of anchors, to reach your erosion and slope stabilization goals.



The tapered nose of the Falcon anchor head are designed to penetrate the soil with a sharp driving edge without deflecting, resulting in improved installation.

INSTALLATION FEATURES OF THE FALCON ANCHORS

- Flush Back end allows anchors to be driven with no internal force, resulting in less breakage and easier driving
- Anchors are configured to allow multiple driving options to meet installation needs.
- Casted and manufactured in the USA, can be used on ARRA projects.
- Strengthened and centered anchor bridge result in quicker load-locking



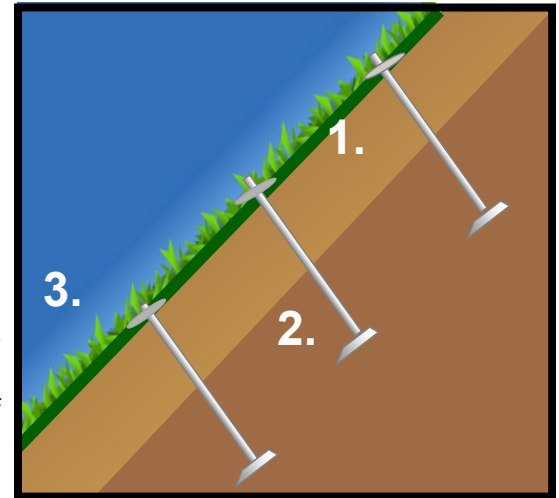
Anchor Reinforced Vegetated System (ARVS) with Falcon Anchors

HOW IT WORKS

1. Western Green HPTRMs: The soft armoring permanent erosion control product conforms to the earth's surface creating a soil-mat interaction that stabilizes the surface. The durability of the woven HPTRM provides confidence to install in high loading/ high survivability applications.

2. Falcon Percussion Driven Anchors (PDAs): The PDAs are deep-seated anchors that are embedded under a potential failure plane, harnessing the strength of the fabric to hold saturated, surficial soils. The top cap allows tensioning to be applied to the cable tendon, creating a load bearing capacity of the system. With the cable bridge centered on the anchor head, the anchor has quicker load-locking, protecting more soil, with less loss of depth.

3. Vegetation Reinforcement: The open 3D structure of the HPTRM allows for rapid vegetation growth, with the roots integrating to create a stabilized surface strata. Together the full ARVS system is used to protect ground from erosion, and add stability to the soil base.

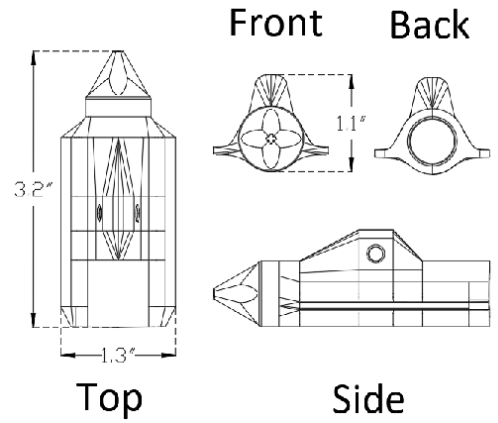
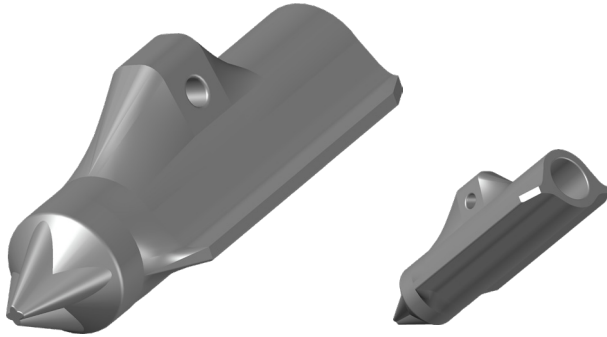


The HPTRM, percussion driven anchor, and vegetation combine to create the integrated ARVS. The components of the ARVS are available in custom configurations which can be designed to optimize performance and value to site-specific challenges.

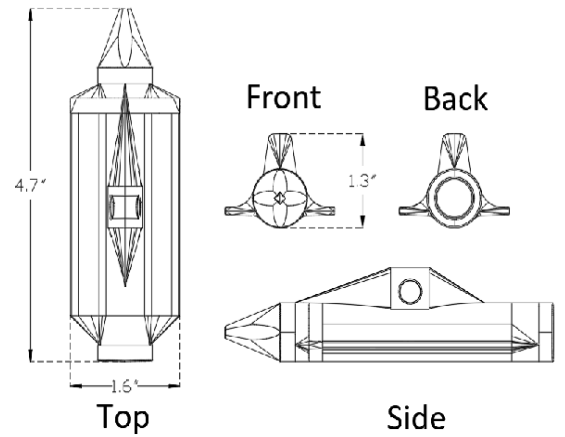
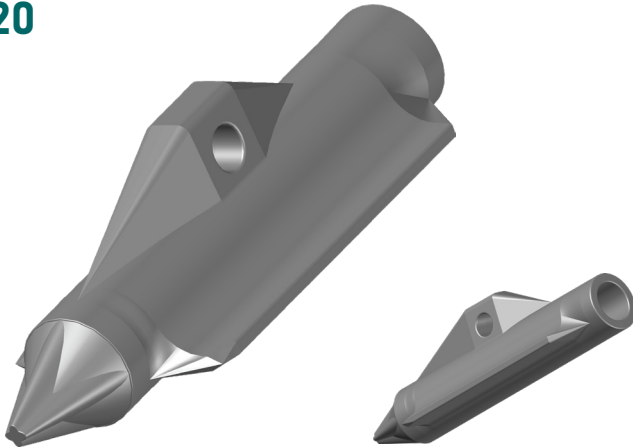
Assembly/Part	F80-X-Z Series	F120-X-Z Series	FL120-SW-Z Series	FL170-SW-Z Series
Cap	4" Dia. Zinc Alloy	4" Dia. Zinc Alloy	6" Dia. Zinc Alloy	6" Dia. Zinc Alloy
Grip	Spring-Loaded Ceramic Crush Roller	Spring-Loaded Ceramic Crush Roller	Spring-Loaded Ceramic Crush Roller	Spring-Loaded Ceramic Crush Roller
Cable	1/8" Dia. ZA Coated Steel, 3 ft Typ.	1/8" Dia. ZA Coated Steel, 6 ft Typ.	1/4" Dia. ZA Coated Steel, 6 ft Typ.	1/4" Dia. ZA Coated Steel, 6 ft Typ.
Anchor	Zinc Alloy 3.1" (80mm) x 1.30" (33mm)	Zinc Alloy 4.7" (120mm) x 1.57" (40mm)	Zinc Alloy 4.7" (120mm) x 1.57" (40mm)	Zinc Alloy 6.7" (170mm) x 2.17" (40mm)
Anchor Bearing Area	3.4 in ² (22.0 cm ²)	6.0 in ² (38.7 cm ²)	6.0 in ² (38.7 cm ²)	12.2 in ² (79.0 cm ²)
Typ. Working Load	750 lbs	750 lbs	2,500 lbs	3,000 lbs
Max. Working Load	1,300 lbs	1,300 lbs	2,700 lbs	3,500 lbs
Ultimate Assembly Strength	1,500 lbs	1,500 lbs	3,000 lbs	3,800 lbs
Ultimate Cable Strength	2,100 lbs	2,100 lbs	7,000 lbs	7,000 lbs
Typical Use	Workhorse Light Assembly	Soft Soil Workhorse Light Assembly	Hard Soil Heavy Assembly	Standard/Soft Soil Heavy Assembly

Falcon Anchor Dimensions

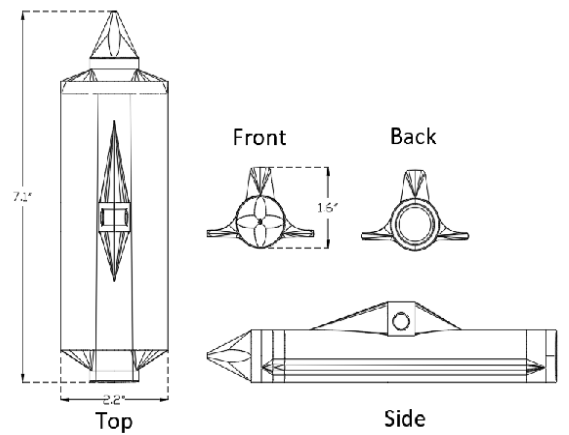
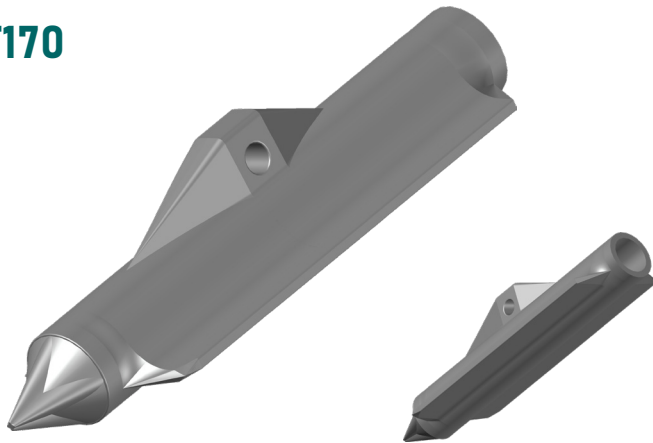
F80



F120



F170



FALCON ANCHORS™

Installation Made Easy with Falcon Anchors™

Falcon Anchors by Western Green take the best of existing anchor system technology and builds improved anchoring products that are a true - **FORCE of NATURE.**

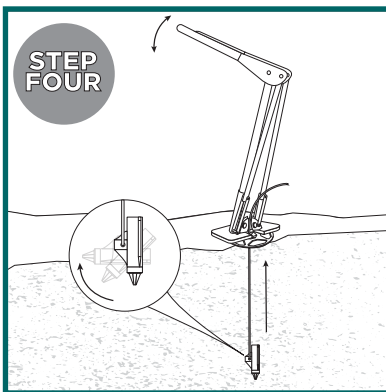
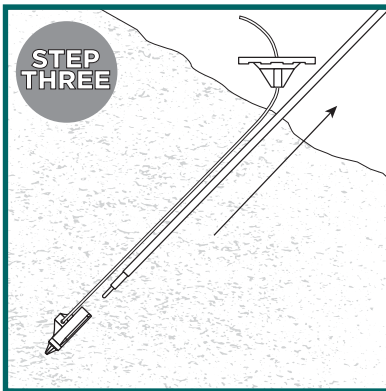
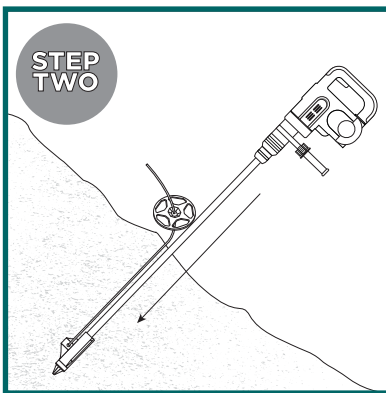
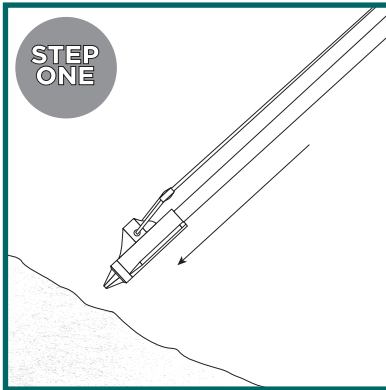
Falcon Anchors feature improved quality, performance, and system installation, resulting in advanced anchored products that perform to the highest tested technologies. Follow these simple steps for installing Falcon Anchors.

Step 1: Insert the drive rod into the Falcon anchor head and place perpendicular to the slope. Insert drive rod with anchor head swiftly through the mat in the desired location.

Step 2: Drive the Falcon Anchor to the desired depth. Anchors can be driven using a sledge hammer, gas powered driver, or hammer drill.

Step 3: Remove Drive rod. In soft soils, the drive rod can be removed by hand, in tougher soils the use of a Jackjaw may be required.

Step 4: Load-lock the anchor once the rod is removed. Slide the top termination flush to the ground. Place Jackjaw baseplate directly over the top termination cap. Ensure the cable is in line with the JackJaw jaws. Handle must be in the up position to open jaws. Move the lever handle in a full down/up motion. Pump until resistance is felt. The top termination cap will appear slightly recessed in the mat once the anchor is appropriately load-locked.





DISTRIBUTED BY:

ASP Enterprises, Quick Supply Co., Bowman Construction Supply & Cascade Geosynthetics are sister companies that serve customers from the Midwest, across the Rocky Mountains to the Pacific Northwest. Together we supply customers with a variety of environmental construction materials including erosion and sediment control, geosynthetics, stormwater management, drainage products, hardscapes and outdoor living, revegetation and soil amendments, waterproofing solutions and more.



We are full line distributors of environmental construction materials for all project types. Contact us for assistance with a project or a quote on products. From specification recommendations and project development to installation and completion, we're here to help with all of your site solution needs. Our warehouses are stocked with readily available inventory and we offer same and next-day deliveries.

ASP ENTERPRISES

aspent.com

salesasp@aspent.com

ST. LOUIS

1099 Cassens Industrial Ct.
St. Louis, MO 63026
636-343-4357

KANSAS CITY

5301 E 59th St.
Kansas City, MO 64130
816-554-1191

OMAHA

15263 Cooper St.
Omaha, NE 68138
402-861-8579

WICHITA

316-393-1554

WENTZVILLE

1906 E Service Rd. HWY 61 N
Wentzville, MO 63385
636-445-9090

QUICK SUPPLY CO.

quicksupplyco.com

salesquick@quicksupplyco.com

DES MOINES

6620 NW Toni Dr.
Des Moines, IA 50313
515-289-1271

BOWMAN CONSTRUCTION SUPPLY

bowmanconstructionsupply.com

salesbcs@bowmanconstructionsupply.com

DENVER

10801 E. 54th Ave.
Denver, CO 80239
303-696-8960

COLORADO SPRINGS

2445 Wayside Ct.
Colorado Springs, CO 80915
719-257-7840

LOVELAND

4495 Woods Ave.
Loveland, CO 80538
970-535-0863

CASCADE GEOSYNTHETICS

cascadageos.com

salescascade@cascadageos.com

PORTLAND

3610 N. Suttle Rd. Bldg B
Portland, OR 97217
971-339-1020

SALT LAKE CITY

425 N. Neil Armstrong Rd.
Salt Lake City, UT 84116
435-276-0820

**GEOSYNTHETICS | EROSION CONTROL | STORMWATER MANAGEMENT
REVEGETATION & SOIL AMENDMENTS | SEDIMENT CONTROL | HARDSCAPES**