

WattleFence™ Biodegradable Sediment Control Alternative



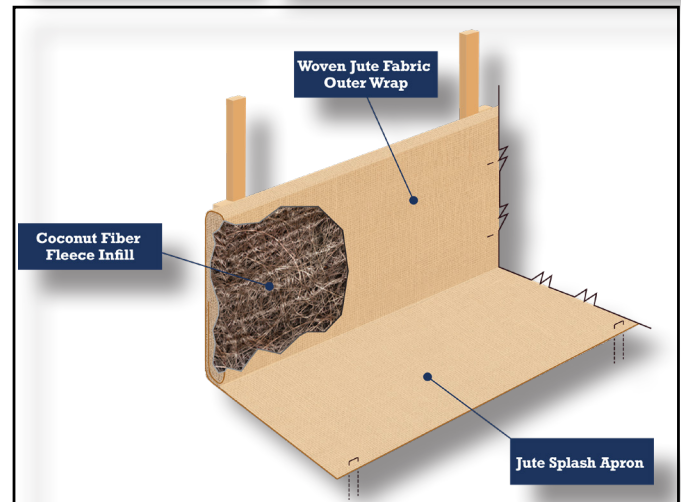
What is WattleFence™?

WattleFence is the next innovation in sediment control, combining the best features of wattles (a.k.a. logs, SFRs) and silt fence. Western Green has developed a tool that creates a **unique and powerful value proposition for those working to contain sediment-laden flow on site**. The finished product is unique in the complete-biodegradability components. WattleFence is constructed using a fleece of coconut fiber that is placed on a biodegradable, planar, woven fabric. This arrangement is folded, forming a thick, multilayer product that measures approximately 9 inches high. Additionally, a six-inch splash apron is left for securing to the ground. Once deployed on site, the product forms an L-shape with the splash apron secured to the ground and the fleece fence held vertical by stakes. This unique system does not require trenching and provides an upstream apron.



Environmentally-Friendly and Renewable

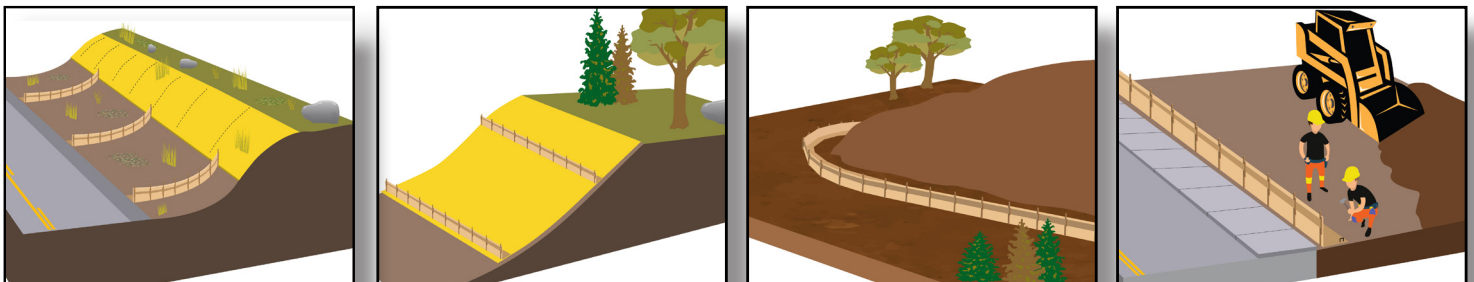
WattleFence is **constructed from natural, renewable components**, and is installed with wood stake supports. The final unit is unique in that it removes all plastics, poly nettings, and metal staking. The result is a sediment control device that is an environmentally-friendly product compared to silt fence, plastic netted logs, or poly-fabric compost socks. The WattleFence is made in the USA, and can offer a solution for project sourcing requirements.



Shown Above: Finished WattleFence Unit, WattleFence Installed, All-natural components of WattleFence

One-Touch Installation

WattleFence works best with the easiest possible installation practice with a unique staking system, easy handling, no trenching or secondary apron requirement. Because of the condensed packaging, a single 100 linear ft unit of WattleFence can be handed easily by a single person, and installed with no equipment needed. Using wooden stakes and other degradable components, the system can be left in place without removal. Comparatively, silt fence often must be removed and wattles can leave plastic netting long after the filling has degraded. **WattleFence allows the contractor to fasten and forget.** WattleFence is a good choice for a wide range of applications including slope interruption protection, channel flow dissipation, stockpile and perimeter control, and more.





DISTRIBUTED BY:

ASP Enterprises, Quick Supply Co., Bowman Construction Supply & Cascade Geosynthetics are sister companies that serve customers from the Midwest, across the Rocky Mountains to the Pacific Northwest. Together we supply customers with a variety of environmental construction materials including erosion and sediment control, geosynthetics, stormwater management, drainage products, hardscapes and outdoor living, revegetation and soil amendments, waterproofing solutions and more.



We are full line distributors of environmental construction materials for all project types. Contact us for assistance with a project or a quote on products. From specification recommendations and project development to installation and completion, we're here to help with all of your site solution needs. Our warehouses are stocked with readily available inventory and we offer same and next-day deliveries.

ASP ENTERPRISES

aspent.com

salesasp@aspent.com

ST. LOUIS

1099 Cassens Industrial Ct.
St. Louis, MO 63026
636-343-4357

KANSAS CITY

5301 E 59th St.
Kansas City, MO 64130
816-554-1191

OMAHA

15263 Cooper St.
Omaha, NE 68138
402-861-8579

WICHITA

316-393-1554

WENTZVILLE

1906 E Service Rd. HWY 61 N
Wentzville, MO 63385
636-445-9090

QUICK SUPPLY CO.

quicksupplyco.com

salesquick@quicksupplyco.com

DES MOINES

6620 NW Toni Dr.
Des Moines, IA 50313
515-289-1271

BOWMAN CONSTRUCTION SUPPLY

bowmanconstructionsupply.com

salesbcs@bowmanconstructionsupply.com

DENVER

10801 E. 54th Ave.
Denver, CO 80239
303-696-8960

COLORADO SPRINGS

2445 Wayside Ct.
Colorado Springs, CO 80915
719-257-7840

LOVELAND

4495 Woods Ave.
Loveland, CO 80538
970-535-0863

CASCADE GEOSYNTHETICS

cascadageos.com

salescascade@cascadageos.com

PORTLAND

3610 N. Suttle Rd. Bldg B
Portland, OR 97217
971-339-1020

SALT LAKE CITY

425 N. Neil Armstrong Rd.
Salt Lake City, UT 84116
435-276-0820

**GEOSYNTHETICS | EROSION CONTROL | STORMWATER MANAGEMENT
REVEGETATION & SOIL AMENDMENTS | SEDIMENT CONTROL | HARDSCAPES**