



Pisa SmoothTM

1-800-UNILOCK | [UNILOCK.COM](https://www.uni-lock.com)

UNILOCK
PAVERS & WALLS

PISA SMOOTH™ CLASSIC

NEW FOR 2020



CLIFFSIDE GREY



GRANITE BLEND



IRISH COAST



SANDY BEACH

PRODUCT ATTRIBUTES

Visual Appearance	A sleek, linear aesthetic with clean lines and subtle edge details that blend well with both modern and traditional design.
Finish	Smooth, linear appearance.

PRODUCT SPECIFICATIONS



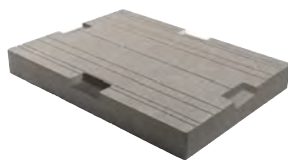
STANDARD
10³/₄ x 21¹/₂ x 3³/₄"
275 x 550 x 85mm



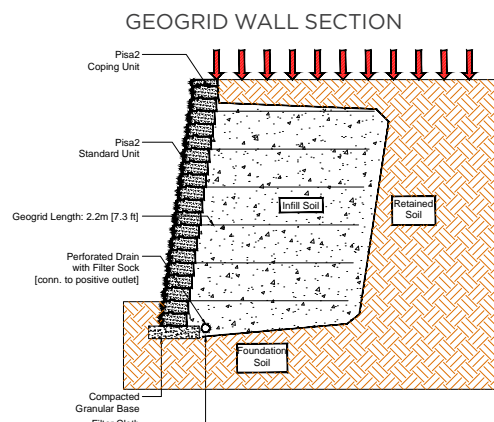
COPING
13³/₄ x 21¹/₂ x 3³/₄"
350 x 550 x 85mm



CORNER
10³/₄ x 21¹/₂ x 3³/₄"
275 x 550 x 85mm

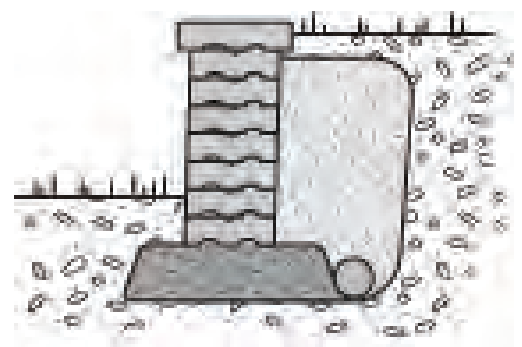


U-GRIP™ BASE PAD
14 x 19 x 2"
355 x 482 x 55mm



Cross sections are examples, and must not be used for construction.

GRAVITY WALL SECTION



RECOMMENDED ADHESIVE



Gator Block Bond XP

- | VOC Compliant
- | Low odor- safe indoors or out
- | Fast curing- provides permanent overnight bond
- | Suitable for use in hot and cold environments
- | Non-shrinking- does not crack
- | Strong and versatile
- | Coverage: For 1/4" Bead (approx)

10 oz		28 oz	
m	ft.	m	ft.
-9	-31	-26	-86

TECHNICAL INFORMATION

ASTM C 1372 Standard Specifications for Dry-Cast Segmental Retaining Wall Units

- Conforms to:
- C140 for Absorption and Compressive Strength > 3000 PSI
 - C1262 for Freeze Thaw Durability <1% mass loss
 - C1372 Overall dimensional variations permissible for width, height and length +/- 1/8" (+/-3 mm)

Unilock standards exceed 5,000 PSI for Pisa® Smooth products with:

- 4% absorption avg.
- 5% absorption max.
- Dimensional Accuracy +/- 1/8" (+/-3 mm)

Test results available upon request

Meets the U.S. Architectural & Transportation Barrier Compliance Board Slip-Resistance Surfaces Advisory Guidelines

LEED INFORMATION

Materials & Resources: LEED V4:

- Building Product Disclosure and Optimization
- Sourcing of Raw Materials - Sourcing of Raw Materials and Extraction • 1 point
- Sourcing of Raw Materials - Leadership Extraction Practices • 1 point
- Material Ingredient Reporting - Material Ingredient Reporting • 1 point
- Material Ingredient Reporting - Material Ingredient Optimization • 1 point
- Environmental Product Declaration • 1 point

If required, summary test data shall be provided with the SRW Design and shall include:

a) SRW Unit shear strength as per ASTM D6916

b) SRW Unit - Geosynthetic Reinforcement connection strength as per ASTM D6638

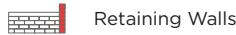
PRODUCT DATA

Stones & Bundling	Face Feet Per		Linear Feet Per		Units Per		Per Bundle		Lbs Per	
	Bundle	Unit	Bundle	Unit	Bundle	Face Feet	Layers	Sections	Unit	Bundle
Gormley Manufacturing; U-Grip - Gormley Manufacturing										
Standard	24.15	0.503	86.61	-	48	-	6	1	48.14	2,311
Corner Unit	24.15	0.503	129.92	-	48	-	6	1	60	2,880
Coping Unit	9.06	0.503	64.98	-	18	-	6	1	76.74	1,381
U-Grip Base Pad			85.39	1.581	54		9		46	2,500

Notes: Sold in full bundles or sections only. Maximum height – 36" (under optimum conditions) but can be engineered for walls that require to be higher. Higher walls can be achieved using geogrid reinforcement. Tapered units will allow for a minimum 5ft. outside radius. Automatic setback is 3/4" per row. Engineering services are available. Contact your Unilock Territory Manager or call 1-800-UNILOCK for further information.

*For custom options, please contact your Unilock Territory Manager.

APPLICATIONS



For coping options, we recommend using LedgeStone™, Natural Stone, Universal Coping or Pisa Coping.

*Things to know:

Handling and Installation – Product is installed using Unilock Concrete Adhesive to secure corners and all rows. Base preparation may vary according to soil and climate conditions. Maximum height is 24" including the unit in the ground (under optimum conditions). Based on 12" deep wall coverage = 21.4 sqft per bundle. Based on an 8" deep wall coverage = 32 sqft per bundle.



Bowman
Construction
Supply Inc.



Quick
Supply Co.



Cascade
GEOSYNTHETICS

LOCATIONS & CONTACT INFO

ASP ENTERPRISES

aspent.com
salesasp@aspent.com

BOWMAN CONSTRUCTION SUPPLY

bowmanconstructionsupply.com
salesbcs@bowmanconstructionsupply.com

QUICK SUPPLY CO.

quicksupplyco.com
salesquick@quicksupplyco.com

CASCADE GEOSYNTHETICS

cascadegeos.com
salescascade@cascadegeos.com

St. Louis, MO 636.343.4357
Omaha, NE 402.861.8579
Kansas City, MO 816.554.1191
Wichita, KS 316.393.1554

Denver, CO 303.696.8960
Colorado Springs, CO 719.257.7840
Loveland, CO 970.535.0863

Des Moines, IA
515.289.1271

Portland, OR
971.339.1020

SOLUTIONS WE SUPPLY

GEOSYNTHETICS

Filter Fabrics

Stabilization Fabrics

Geogrids

- Road Grids
- Wall Grids
- Slope Stabilization

Specialty Fabrics

Composite Geomembranes

- GCLs, PVC, HDPE, LLDPE, EPDM, Granular Bentonite

SEDIMENT CONTROL

Inlet Protection

- Grated Inlet, Curb Inlet, Area Inlet Protection

Ditch Checks

- Triangle Silt Dike
- GeoRidge

Perimeter Protection

- High and Low-Porosity Silt Fence, Straw Wattles, Silt Socks
- Safety Fence

Flocculants & Water Treatment

- Polymer-Based & Natural Flocculants

Sediment Basin Skimmers

Dewatering Bags

Trackout Control

- FODS
- Rumble Grates

Turbidity Curtains

EROSION CONTROL

Basic Hydraulically Applied Mulches

- Wood
- Paper
- Blends
- Straw

High-Performance Hydraulically

Applied Products

- BFM
- FGM
- Additives & Tackifiers

Temporary Erosion Control Blankets

- Coir & Jute Mat/Nettings
- Short-Term ECBs
- Extended-Term ECBs

Permanent Erosion Control Blankets

- Turf Reinforcement Mats
- HP-TRMs
- Anchor Reinforced Vegetation System

Structural BMPs

- Transition Mats
- Geoweb Cellular Confinement
- Composite Vegetated Armor System
- Flex MSE Vegetated Wall System
- Articulated Concrete Block
- Gabions
- Grout-Filled Geotextile Mats

Vegetation Establishment

- Native Seed & Turf Seed
- Fertilizers
- Organic Soil Additives
- Stratavault Soil Cells

STORMWATER MANAGEMENT

Water Quality

- Inlet Filter Boxes
- Pre-Treatment Chamber
- Nutrient Separating Baffle Boxes
- High-Flow Biofiltration Media
- Hydrodynamic Separators
- Stratavault

Water Quantity

- Modular Underground Storage Systems
- Chamber Detention Systems

Drainage

- HDPE Swale Liner
- Pipe & Fittings
- Drainage Composites
- Strip Drain

Inlet Structures

- PVC
- Drain Basins, In-Line Drains
- Landscape

Permeable Pavers

- Permeable Articulating Concrete Block
- Grass Pavers
- Gravel Pavers
- Concrete Pavers

SPECIALTY

Natural & Synthetic Coir Fiber Logs

Vegetated Reinforced Soil Slopes

Soil Anchors

Root Barrier System

AquaBlok

Muscle Wall

We are full line distributors of construction materials for all project types. Contact us for assistance with a project. From specification and development to installation and completion, we're here to help with all of your site solution needs.

**GEOSYNTHETICS | EROSION CONTROL | STORMWATER MANAGEMENT
SEDIMENT CONTROL | REVEGETATION & SOIL AMENDMENTS**