

StormBasin BMP & Plus Standard and Combination Inlet

Installation Guide



Fabco Industries Corporate Office

390 Oser Ave. Unit B
Hauppauge, NY 11788
Telephone: 631.393.6024
Fax: 631.501.5528
www.fabco-industries.com



General Product Notes:

- ✓ This product is designed to accept only Fabco media cartridges. Each cartridge is highly engineered to target specific pollutants such as Total Suspended Solids, Heavy Metals, Hydrocarbons, Nutrients, and Bacteria, just to name a few. Contact Fabco Industries for more information.
- ✓ Rectangular and square StormBasins include easily adjustable flanges to ensure a proper and tight fit.
- ✓ All StormBasin BMP and Plus units are modular and can be purchased with the following options:
 - Multiple cartridges depending on the size of the storm drain opening.
 - Protected bypass option to prevent resuspension of captured trash and debris.
 - Oil boom option for added hydrocarbon protection.
- ✓ Although not generally necessary, StormBasins are removable, and include lifting tabs in each corner to accept a standard J-hook. Typically, the StormBasin units are cleaned in-place using a vacuum truck or hand tools such as a shovel to remove the captured debris. Cartridges simply twist-lock in place.
- ✓ The StormBasin BMP and Plus Devices are made from either 5000 series aluminum alloy or 300 series stainless steel welded construction and come completely assembled with stainless steel hardware.
- ✓ All StormBasin BMP and Plus units come with an 8-Year limited warranty standard.

Safety Precautions:

Installation of this product should be performed by qualified personnel only. Be sure to follow the proper road safety precautions in accordance with local regulations.

- *Have a Plan:* Every road project should have a transportation management plan. The plan should consist of a temporary traffic control plan to protect workers by safely conducting traffic around or through the work zone.
- *Properly Control Traffic:* The work zone should consist of an advanced warning area with warning signs alerting motorists of upcoming changes in driving conditions, a transition area using traffic control devices for lane closures and traffic pattern shifts, a buffer area, the work area, and a termination area to allow traffic to resume back to normal and a sign indicating that the work zone has ended. All traffic control devices whether its cones, barrels, barriers or signs should comply with the Federal Highway Administration's Manual on Uniform Traffic Control Devices (MUTCD) along with any state agency requirements.
- *Wear Proper Safety Equipment:* Proper safety equipment should be worn by all personnel inside the work zone. Personal protective equipment (PPE) including hard hats, steel-toed boots, highly visible clothing and, depending on the noise levels, hearing protection. All PPE should meet or exceed the American National Standards Institute's (ANSI) developed standards. All highly visible clothing, whether it's a vest, jacket or shirt should be bright fluorescent orange or lime/yellow and also have visible reflective material especially if working at night and should meet ANSI Class 2 or 3 standards.
- *Lifting Caution:* Grates can be extremely heavy. Some type of lifting mechanism is highly recommended.
- *Be Aware of Your Surroundings:* Regardless of what your job duties entail in the work zone you should always be mindful of what is going on around you. Whenever possible, face traffic while inside the work zone or have a spotter available when you must have your back turned.
- *Have a Competent Person on Hand:* A competent person should be onsite whenever work is being performed. According to OSHA, a competent person is someone who is "capable of identifying existing and predictable hazards in the surroundings, or working conditions which are unsanitary, hazardous, or dangerous to employees, and who has authorization to take prompt corrective measures to eliminate them." A competent person is needed to conduct hazard assessments and regular inspections of the worksite. A competent person is also needed to select the appropriate class of PPE to be used by workers and to approve the appropriate types of traffic control devices. Workers should report any unsafe hazards or equipment to the competent person assigned to the work zone so they can be corrected immediately.
- *In Case of Spills:* In the event of a spill, all inspection and cleaning operations should be aborted until trained HAZMAT personnel secure the jobsite.

Item Checklist



Typical Basin Housing (x1)



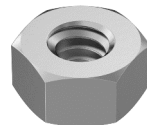
Protected Bypass Hood (x1)
(Optional)



Flat Washer (A/R)
(P/N: 92141A029)



Split Lock Washer (A/R)
(P/N: 92146A029)



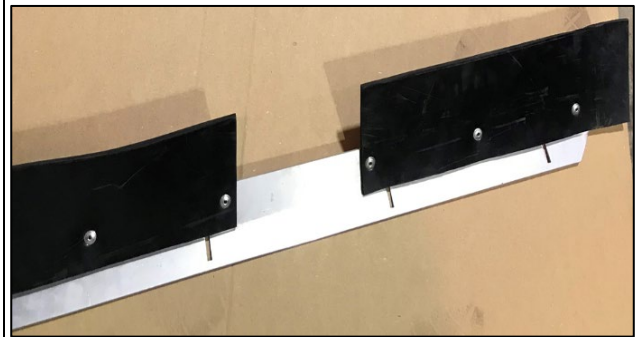
SS Hex Nut (A/R)
(P/N: 91845A029)



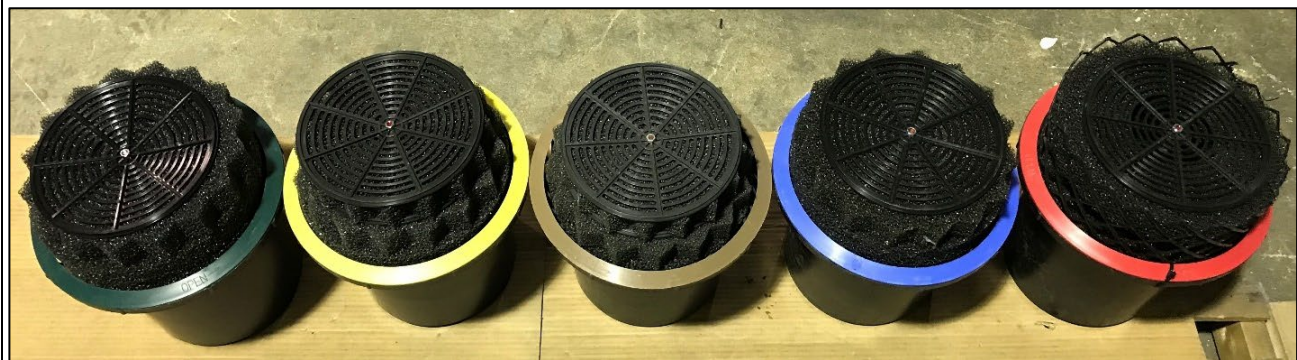
Carriage Bolt (A/R)
(P/N: 92356A540)



Sliding adjustable flange, 4-Flanges for Drop-Inlets, and 3-Flanges and 1-Rubber SplashGuard for Combination-Inlets.



Sliding adjustable SplashGuard flange (x1) for combination inlets only. Used in conjunction with 3-standard flanges.



Fabco offers a large variety cartridges engineered to target specific pollutants of concern. All of our cartridges are interchangeable and will twist-lock into any of the StormBasin products. The number of cartridges received will vary depending on the StormBasin size that was ordered. Check the purchase order to verify the quantity and type of cartridge ordered.

Typical Tools Required



J-Hook for Removing Grate



Measuring Tape



Stiff Wire Brush



OR



7/16" Socket Wrench or Drive Drill



Installation Procedure

1. Safety First:

- Ensure adherence to proper road safety rules and regulations when working in the street.
- Set up safety cones, signage, and barriers as needed to create a safe work zone.

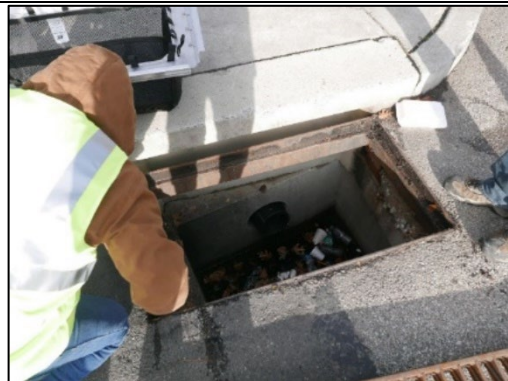
2. Remove the Grate:

- Begin by removing the grate from the inlet.
- **CAUTION:** Grates are extremely heavy. It is highly recommended to use some type of lifting mechanism or J-hook with 2-team members.
- Carefully place the grate on the ground away from the work area to avoid accidents.



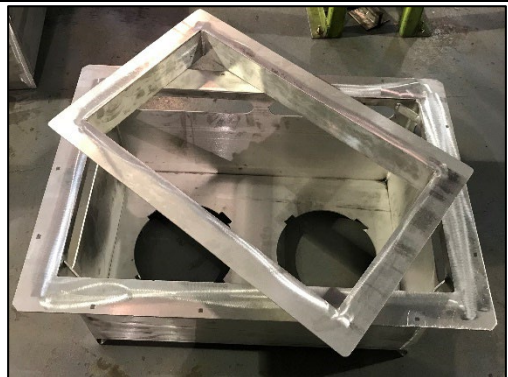
3. Prepare the Inlet:

- Make sure the unit supplied is correct based on the purchase order (PO), part number, and description. Some units are supplied with labels that include the storm drain location.
- Clear away any obstructions or debris that might hinder the installation of the StormBasin unit.
- Use a wire brush to clean the grate support ledges to ensure the unit sits flat and even beneath the storm grate.



4. Prepare the StormBasin Unit:

- Verify that the cartridges are removed as well as the protected bypass hood if one is provided.
- If an oil boom option was ordered, it can stay attached during the installation process.



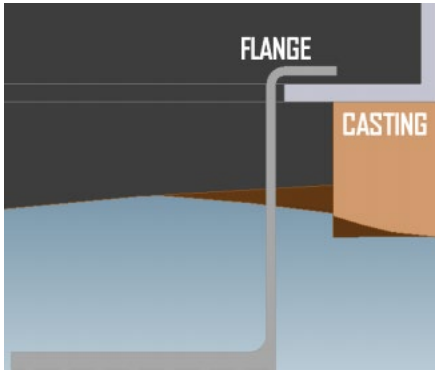
5. Measure and Adjust:

- Measure the clear opening length and width of the storm drain.
- Loosen the flange bolts and adjust the sliding flanges to the desired position to fit into the drain clear opening.
- Ensure the flanges are extended in both directions as far as possible to achieve a snug fit and properly support the unit when full of trash and debris.
- Secure each bolt in place using a standard 7/16" socket wrench. Be cautious not to over-tighten the bolts.



6. Install the StormBasin:

- Carefully lower the StormBasin assembly into the storm drain.
- Ensure that the support flanges are firmly resting on all of the storm grate support ledges.
- Reinstall the storm grate directly on top of the flanges.



7. Secure the Worksite:

- After completing the StormBasin installation process, collect all tools, safety cones, signage, and other equipment.
- Ensure no traffic or pedestrian tripping hazards are left behind.
- Discard any debris collected during the installation in accordance with local disposal regulations.



For best performance, it's recommended that regular scheduled maintenance operations be performed in accordance with Fabco's StormBasin BMP and Plus Operation and Maintenance Guide.

For additional information on this and all Fabco products, please visit our website at www.fabco-industries.com

StormBasin – BMP & Plus **Operation & Maintenance Guide**





Bowman
Construction
Supply Inc.



Quick
Supply Co.



Cascade
GEOSYNTHETICS

LOCATIONS & CONTACT INFO

ASP ENTERPRISES

aspent.com
salesasp@aspent.com

BOWMAN CONSTRUCTION SUPPLY

bowmanconstructionsupply.com
salesbcs@bowmanconstructionsupply.com

QUICK SUPPLY CO.

quicksupplyco.com
salesquick@quicksupplyco.com

CASCADE GEOSYNTHETICS

cascadegeos.com
salescascade@cascadegeos.com

St. Louis, MO 636.343.4357
Omaha, NE 402.861.8579
Kansas City, MO 816.554.1191
Wichita, KS 316.393.1554

Denver, CO 303.696.8960
Colorado Springs, CO 719.257.7840
Loveland, CO 970.535.0863

Des Moines, IA
515.289.1271

Portland, OR
971.339.1020

SOLUTIONS WE SUPPLY

GEOSYNTHETICS

Filter Fabrics

Stabilization Fabrics

Geogrids

- Road Grids
- Wall Grids
- Slope Stabilization

Specialty Fabrics

Composite Geomembranes

- GCLs, PVC, HDPE, LLDPE, EPDM, Granular Bentonite

SEDIMENT CONTROL

Inlet Protection

- Grated Inlet, Curb Inlet, Area Inlet Protection

Ditch Checks

- Triangle Silt Dike
- GeoRidge

Perimeter Protection

- High and Low-Porosity Silt Fence, Straw Wattles, Silt Socks
- Safety Fence

Flocculants & Water Treatment

- Polymer-Based & Natural Flocculants

Sediment Basin Skimmers

Dewatering Bags

Trackout Control

- FODS
- Rumble Grates

Turbidity Curtains

EROSION CONTROL

Basic Hydraulically Applied Mulches

- Wood
- Paper
- Blends
- Straw

High-Performance Hydraulically

Applied Products

- BFM
- FGM
- Additives & Tackifiers

Temporary Erosion Control Blankets

- Coir & Jute Mat/Nettings
- Short-Term ECBs
- Extended-Term ECBs

Permanent Erosion Control Blankets

- Turf Reinforcement Mats
- HP-TRMs
- Anchor Reinforced Vegetation System

Structural BMPs

- Transition Mats
- Geoweb Cellular Confinement
- Composite Vegetated Armor System
- Flex MSE Vegetated Wall System
- Articulated Concrete Block
- Gabions
- Grout-Filled Geotextile Mats

Vegetation Establishment

- Native Seed & Turf Seed
- Fertilizers
- Organic Soil Additives
- Stratavault Soil Cells

STORMWATER MANAGEMENT

Water Quality

- Inlet Filter Boxes
- Pre-Treatment Chamber
- Nutrient Separating Baffle Boxes
- High-Flow Biofiltration Media
- Hydrodynamic Separators
- Stratavault

Water Quantity

- Modular Underground Storage Systems
- Chamber Detention Systems

Drainage

- HDPE Swale Liner
- Pipe & Fittings
- Drainage Composites
- Strip Drain

Inlet Structures

- PVC
- Drain Basins, In-Line Drains
- Landscape

Permeable Pavers

- Permeable Articulating Concrete Block
- Grass Pavers
- Gravel Pavers
- Concrete Pavers

SPECIALTY

Natural & Synthetic Coir Fiber Logs

Vegetated Reinforced Soil Slopes

Soil Anchors

Root Barrier System

AquaBlok

Muscle Wall

We are full line distributors of construction materials for all project types. Contact us for assistance with a project. From specification and development to installation and completion, we're here to help with all of your site solution needs.

**GEOSYNTHETICS | EROSION CONTROL | STORMWATER MANAGEMENT
SEDIMENT CONTROL | REVEGETATION & SOIL AMENDMENTS**