

# RESILIENT FLOOD MITIGATION





Supporting state/local governments and tribes/territories in building resilient infrastructure and communities through nature-based flood mitigation solutions.

## Nature-based solutions

Solmax is a global leader in developing and manufacturing innovative flood mitigation & erosion protection systems. Our low carbon solutions stabilize the earth and improve the performance of levees, dams, channels and other key infrastructure.

### Resilient solutions that meet FEMA's nature-based criterion

- Promotes vegetation and helps restore rivers, floodplains, wetlands, living shorelines and soil stabilization.
- First and only manufacturer of High Performance Turf Reinforcement Mat (HPTRM) to have our carbon footprint verified by an independent, third-party organization.
- The carbon footprint of our HPTRM is up to thirty times smaller than traditional solutions such as rock riprap and concrete.
- HPTRMs have been recognized by the Environmental Protection Agency (EPA) as a Best Management Practice (BMP) to improve water quality.
- Reinforced vegetative solutions support living shorelines, whereas rock riprap and concrete can decrease streamside vegetation and adversely impact fish populations.

### Benefits

- Half the installed cost of rock and concrete
- **Tested and approved by the U.S. Army Corps of Engineers (USACE)**
- Made in the USA



### Technical support

Solmax's team of professional engineers offer full service support throughout the design process including site analysis, product selection, design support, construction details, and installation assistance.

SANTA ROSA, FLORIDA

# Oyster Lake outfall improvement



**Industry:** Water  
**Sub-industry:** Flood mitigation, Coastal protection and reclamation  
**Location:** Santa Rosa, Florida  
**Product:** PROPEX® Armormax®

Oyster Lake’s outfall had become severely degraded and the overall health was strained due to major storms and urban growth.

Walton County and other state agencies wanted to reinforce the outfall while preserving the natural vegetation.

## Overview

Oyster Lake is a coastal dune lake that creates a unique interchange between a natural stormwater lake and the Gulf of Mexico. When a coastal dune lake reaches a high water level, flow breaks through the dune system forming a channel between the lake and the Gulf. The outfall is critical for regulating water levels and mitigating flooding.

**FEMA included this project in its Mitigation Action Portfolio (MAP) as a successful nature-based solutions for flood mitigation.**

## Solution

More than 2,000 square yards of **PROPEX Armormax**, consisting of High Performance Turf Reinforcement Mat (HPTRM) and Engineered Earth Anchors (EEA), were installed along the channel. This system was selected because it provides slope stabilization and erosion control while promoting vegetation. During installation, 2,000 sea oats were planted within the HPTRM, which is designed to promote vegetation.

After installation, Hurricane Michael (category 4) made landfall 60 miles east of Oyster Lake causing winds up to 80 mph, storm surge, and significant rainfall and flooding at the project location. The vegetated slopes of the outfall withstood the extreme conditions, protecting beachfront homes, nearby businesses, underground utilities, a section of Highway 30A, and a bridge that crosses the channel.



Solmax is not a design or engineering professional and has not performed any such design services to determine if Solmax’s goods comply with any project plans or specifications, or with the application or use of Solmax’s goods to any particular system, project, purpose, installation, or specification.

Products mentioned are registered trademarks of Solmax in many countries of the world.

TEMECULA, CALIFORNIA

# Murrieta Creek stabilization



**Industry:** Water  
**Sub-industry:** Flood mitigation  
**Location:** Temecula, California  
**Product:** PROPEX® Armormax®

**The purpose of this project was to mitigate flooding by conveying the 100-year flow within Murrieta Creek.**

**Overview**

Murrieta Creek has a history of devastating flooding. Notably, the flood of 1993 that claimed the lives of five people and damaged 70 aircraft and two bridges at Pendleton Marine Corps Base. The flood also inundated pumps at the Eastern Municipal Water District,

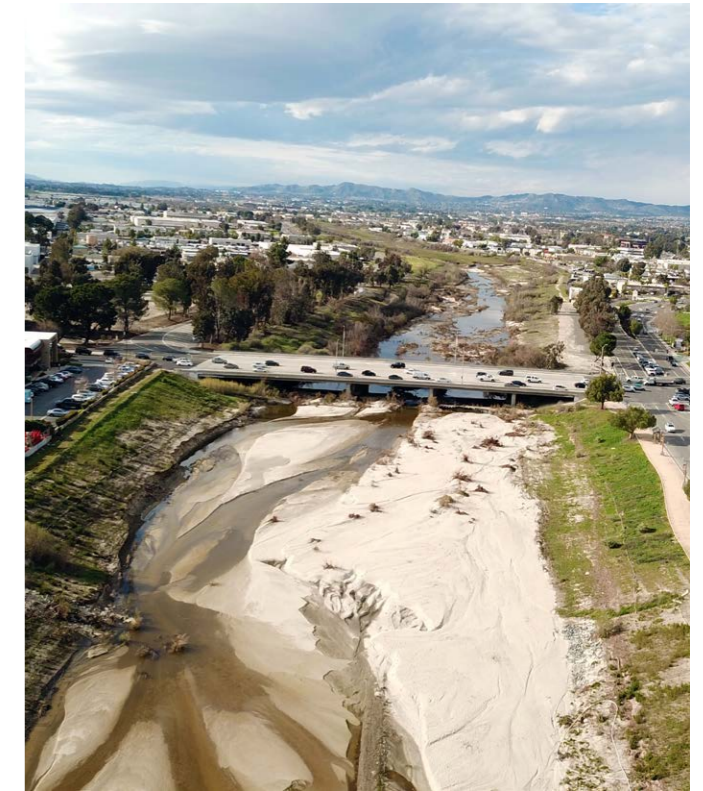
causing 5 million gallons of raw sewage to flow into the creek. Multiple major flood events have occurred since the 1993 flood. Today, more than 600 homes and commercial structures are vulnerable to flooding.

**Solution**

In 2000, the U.S. Army Corps of Engineers initiated the Murrieta Creek Flood Control, Environmental Restoration and Recreation Project to mitigate flooding. In phase two of the project, **PROPEX Armormax** was selected to provide erosion and scour protection on the creek banks. The system consists of High Performance Turf Reinforcement Mat (HPTRM) and earth anchors that provide resilient flood control for up to 75 years.

Maintaining water quality was a main concern because Murrieta Creek is recognized as one of the last high-quality, minimally disturbed riverine environments in Southern California. **PROPEX Armormax** helps to decrease sedimentation and pollutants and encourages infiltration of water back into the groundwater table. The system also promotes rapid root development for long-term vegetation, whereas rock riprap, can decrease streamside vegetation and adversely impact fish populations.

Vegetation was quickly established, and **PROPEX Armormax** has effectively protected the channel from erosion and flooding.



Solmax is not a design or engineering professional and has not performed any such design services to determine if Solmax's goods comply with any project plans or specifications, or with the application or use of Solmax's goods to any particular system, project, purpose, installation, or specification.

Products mentioned are registered trademarks of Solmax in many countries of the world.

WALLER COUNTY, TEXAS

# Harvey Ditch stabilization



**Industry:** Water  
**Sub-industry:** Channel stabilization  
**Location:** Waller County, Texas  
**Product:** **PROPEX® Armormax®**  
**PROPEX Scourlok®**

to experience erosion and slope instability, reducing the channel's capacity.

The severe erosion and reduction in channel capacity prompted BKDD to pursue permanent erosion protection.

**Overview**

Brookshire-Katy Drainage District (BKDD) maintains a drainage channel that runs along Stalknecht Road in Waller County, Texas. Extreme storm water flows caused by Hurricane Harvey caused the roadside drainage ditch

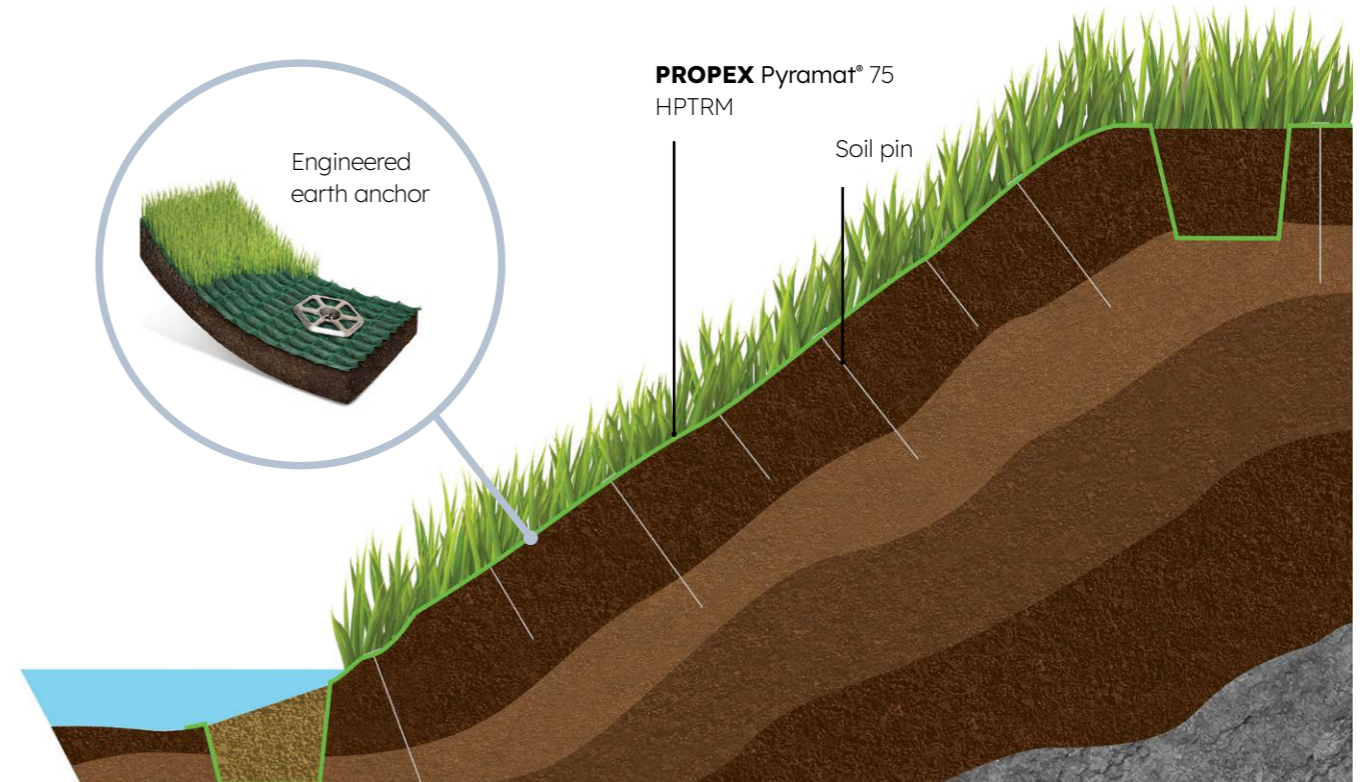
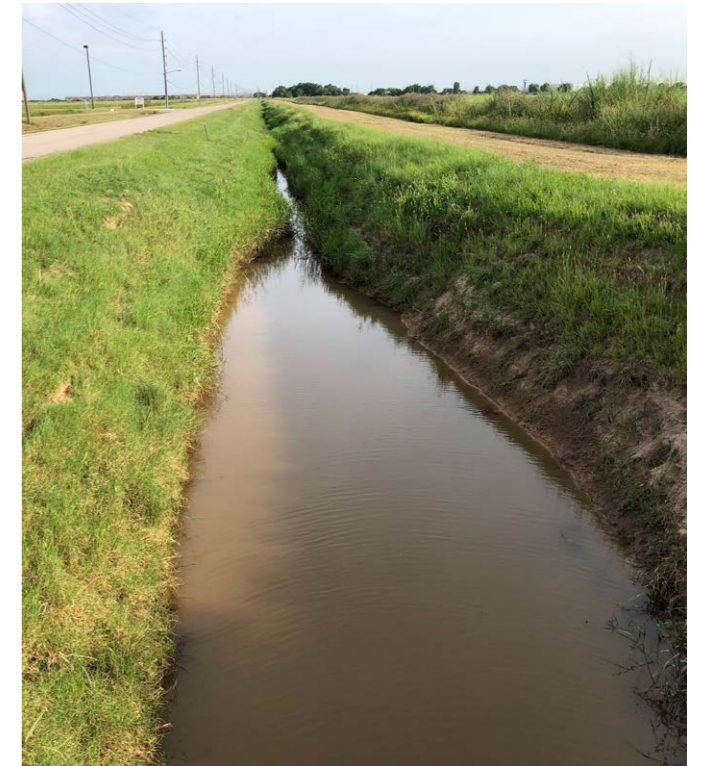
**PROPEX Scourlok can be filled with on-site soil, reducing the number of trucks transporting materials to the site, thus reducing carbon emissions.**

**Solution**

An early phase in the design process used rock filled gabion baskets to armor the channel, however, the design engineer wanted a more economical and environmentally-friendly solution. Gabion baskets require the removal and transportation of excavated material from the site, but **PROPEX Scourlok** allows the reuse of on-site soil to fill the units.

Stakeholders selected **PROPEX Scourlok** for the remaining phases of the project because it was a more cost-effective solution. **PROPEX Scourlok** is a stabilization system that features rigid and interlocking cells armored with erosion protection from a highly UV stabilized High Performance Turf Reinforcement Mat (HPTRM). The system is engineered to provide a vegetated, gravity wall system that resists sliding and overturning for up to 75 years.

The design included an eight-foot wall, comprised of two tiers of **PROPEX Scourlok** that spans 500 feet along the eastern side of the channel. The design also included 300 square yards of **PROPEX Armormax** along the top of the channel.



Solmax is not a design or engineering professional and has not performed any such design services to determine if Solmax's goods comply with any project plans or specifications, or with the application or use of Solmax's goods to any particular system, project, purpose, installation, or specification.

Products mentioned are registered trademarks of Solmax in many countries of the world.

OAHU, HAWAII

# Kaneohe Stream bank restoration



**Industry:** Water  
**Sub-industry:** Rivers, streams and estuaries  
**Location:** Oahu, Hawaii  
**Product:** PROPEX® Pyrawall®

channel stabilization. Historically, a concrete solution has been used, but the City and County wanted a more natural system that encouraged the growth of native vegetation.

**Overview**

As part of Hawaii’s National Pollutant Discharge Elimination System (NPDES) and Erosion Prone Area Improvements Program, a streambank stabilization project was completed along Kaneohe Stream in Kaneohe, Oahu.

Over the past 30 years, high-flow events eroded higher portions of the channel, causing encroachment of several private properties. To prevent additional property loss and mitigate future flooding, the City and County of Honolulu wanted to find a solution that would provide long-term

**Due to limited site accessibility, the geotechnical investigation and sampling relied on the use of hand tools. A system was needed that was lightweight and could easily be carried on site and installed without heavy equipment.**

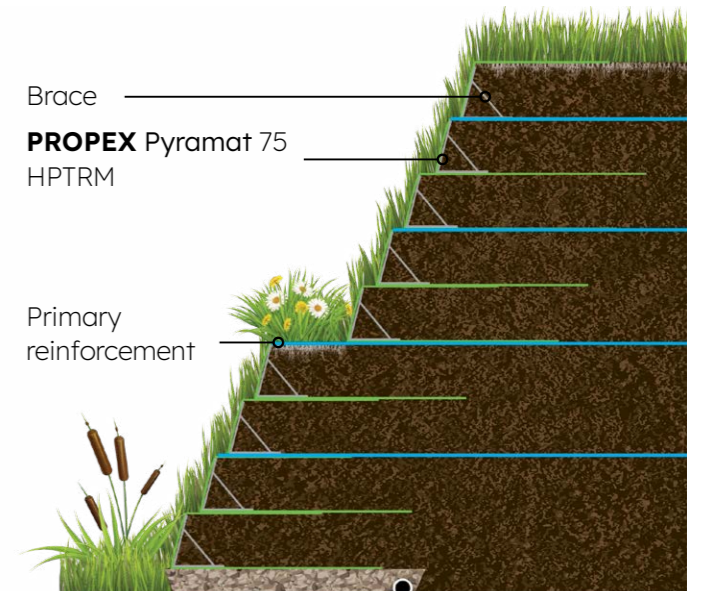
**Solution**

**PROPEX** Pyrawall engineered wrap-faced vegetated solution, was selected to reinforce 330 feet of Kaneohe Stream.

The installation ranged from six to eight feet high and was designed based on geotechnical information available at the site. This included steep 1H:4V slope segments with a mid-slope planting bench.

**PROPEX** Pyrawall combines High Performance Turf Reinforcement Mat (HPTRM) with internal braces to reinforce soil mass and resist lateral earth pressures. It is also designed to encourage vegetation and is a vegetated Best Management Practice Solution for NPDES Storm Water Compliance. This wall system is comprised entirely of three engineered geosynthetic components with no metal, concrete or short-lived biodegradable materials.

The vegetated wrap-face wall system provided a resilient bank reconstruction and stabilization along a residential section of the Kaneohe Stream that will provided a flood mitigation for up to 75 years.



Solmax is not a design or engineering professional and has not performed any such design services to determine if Solmax’s goods comply with any project plans or specifications, or with the application or use of Solmax’s goods to any particular system, project, purpose, installation, or specification.

Products mentioned are registered trademarks of Solmax in many countries of the world.

## About Solmax

Solmax is a world leader in sustainable construction solutions, for civil and environmental infrastructure. Its pioneering products separate, contain, filter, drain and reinforce essential applications in a more sustainable way – making the world a better place.

The company was founded in 1981, and has grown through the acquisition of GSE, TenCate Geosynthetics and Propex. It is now the largest geosynthetics company in the world, empowered by more than 2,000 talented people. Solmax is headquartered in the province of Quebec, Canada, with subsidiaries and operations across the globe.

## Uncompromised quality

Our products are manufactured to strict international quality standards. All our products are tested and verified at our dedicated and comprehensive laboratories which maintain numerous accreditations. We offer our partners a wide scope of testing according to published standards to ensure products delivered to sites meet specified quality requirements.

# Let's build infrastructure better



Solmax is not a design or engineering professional and has not performed any such design services to determine if Solmax's goods comply with any project plans or specifications, or with the application or use of Solmax's goods to any particular system, project, purpose, installation, or specification.

Products mentioned are registered trademarks of Solmax in many countries of the world.

[SOLMAX.COM](https://www.solmax.com)





## DISTRIBUTED BY:

ASP Enterprises, Quick Supply Co., Bowman Construction Supply & Cascade Geosynthetics are sister companies that serve customers from the Midwest, across the Rocky Mountains to the Pacific Northwest. Together we supply customers with a variety of environmental construction materials including erosion and sediment control, geosynthetics, stormwater management, drainage products, hardscapes and outdoor living, revegetation and soil amendments, waterproofing solutions and more.



We are full line distributors of environmental construction materials for all project types. Contact us for assistance with a project or a quote on products. From specification recommendations and project development to installation and completion, we're here to help with all of your site solution needs. Our warehouses are stocked with readily available inventory and we offer same and next-day deliveries.

### ASP ENTERPRISES

[aspent.com](http://aspent.com)

[salesasp@aspent.com](mailto:salesasp@aspent.com)

#### ST. LOUIS

1099 Cassens Industrial Ct.  
St. Louis, MO 63026  
636-343-4357

#### KANSAS CITY

5301 E 59th St.  
Kansas City, MO 64130  
816-554-1191

#### OMAHA

15263 Cooper St.  
Omaha, NE 68138  
402-861-8579

#### WICHITA

316-393-1554

#### WENTZVILLE

1906 E Service Rd. HWY 61 N  
Wentzville, MO 63385  
636-445-9090

### QUICK SUPPLY CO.

[quicksupplyco.com](http://quicksupplyco.com)

[salesquick@quicksupplyco.com](mailto:salesquick@quicksupplyco.com)

#### DES MOINES

6620 NW Toni Dr.  
Des Moines, IA 50313  
515-289-1271

### BOWMAN CONSTRUCTION SUPPLY

[bowmanconstructionsupply.com](http://bowmanconstructionsupply.com)

[salesbcs@bowmanconstructionsupply.com](mailto:salesbcs@bowmanconstructionsupply.com)

#### DENVER

10801 E. 54th Ave.  
Denver, CO 80239  
303-696-8960

#### COLORADO SPRINGS

2445 Wayside Ct.  
Colorado Springs, CO 80915  
719-257-7840

#### LOVELAND

4495 Woods Ave.  
Loveland, CO 80538  
970-535-0863

### CASCADE GEOSYNTHETICS

[cascadageos.com](http://cascadageos.com)

[salescascade@cascadageos.com](mailto:salescascade@cascadageos.com)

#### PORTLAND

3610 N. Suttle Rd. Bldg B  
Portland, OR 97217  
971-339-1020

#### SALT LAKE CITY

425 N. Neil Armstrong Rd.  
Salt Lake City, UT 84116  
435-276-0820

**GEOSYNTHETICS | EROSION CONTROL | STORMWATER MANAGEMENT  
REVEGETATION & SOIL AMENDMENTS | SEDIMENT CONTROL | HARDSCAPES**