



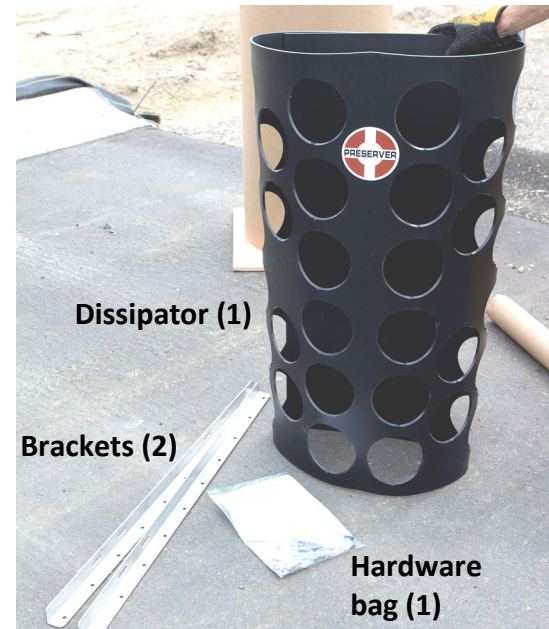
The Preserver™

Dissipator Installation Instructions

www.ThePreserver.com

Page 1/2

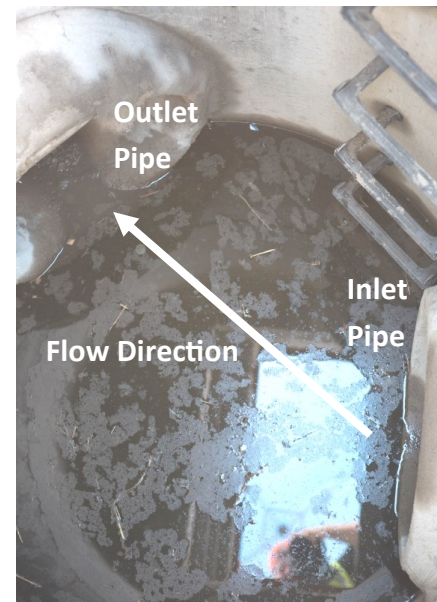
1) Confirm contents.



2) Gather required tools.



3) Locate inlet pipe.



4) Inspect bracket locations - 9" ± from inside of pipe - and remove/avoid any obstructions.



5) Make a vertical mark 9" ± from inside of pipe. Repeat on other side of pipe at an equal distance.



6) Make a horizontal mark from center of pipe, crossing bracket marks from previous step.



7) Mark the center of the bracket on the back (pipe side) edge.



8) Align wall bracket with marks made in Steps 5, 6 and 7. Use level to ensure bracket is vertical prior to next step.



9) Install one anchor bolt per pair of slots. See additional anchor bolt instructions in hardware bag. Repeat Steps 6 through 9 to attach the other wall bracket.

Pat. US 9,752,600 B2
Pat. CA 2,893,173

Questions? Call 877-773-0073
Installer is responsible for meeting all safety and confined space entry requirements.

PROUDLY MADE IN THE USA
QUALITY MATERIALS:
• 100% recycled HDPE
• Stainless steel brackets
• Stainless steel hardware



The Preserver™

www.ThePreserver.com

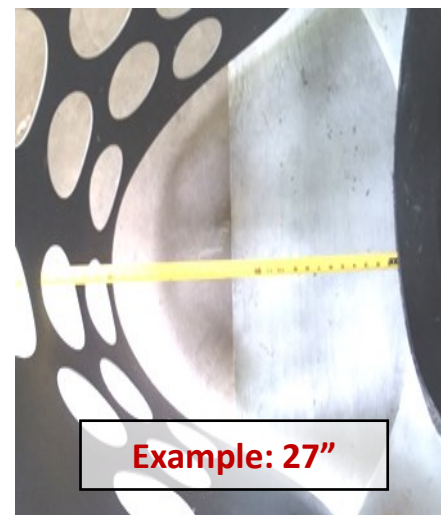
Dissipator Installation Instructions

Page 1/2

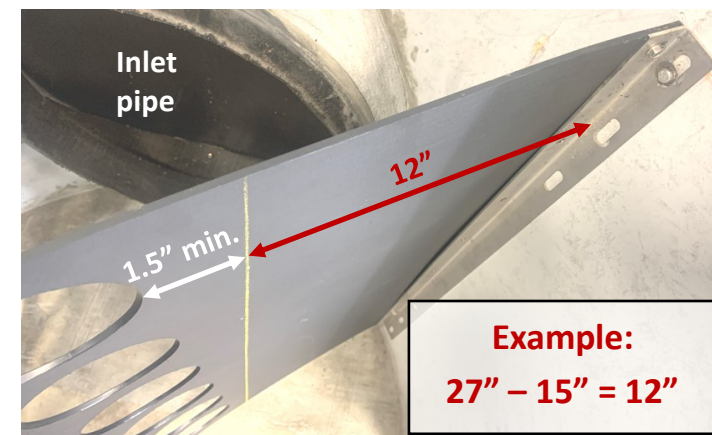
10) Temporarily connect the Dissipator to the pipe side of both brackets using (1) or (2) self-tapping screws at the top and bottom of each bracket.



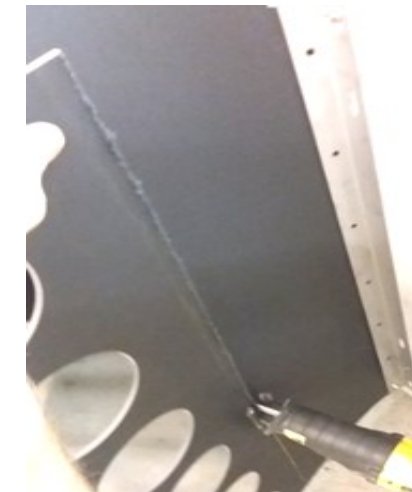
11) Measure the distance from the end of the pipe invert to the end of the Dissipator,



12) Subtract the greater of 15" or half the pipe diameter from the measurement in Step 11. Mark that distance on the dissipator from the wall and draw a vertical cut line. Cut line must be at least 1.5" from any Dissipator opening — adjust as necessary.



13) If determined necessary in Step 12, make a straight cut along the cut line. Remove scrap from bracket and retain screws.



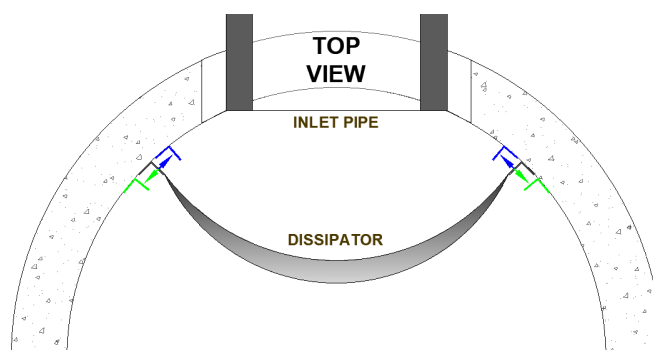
14) Attach dissipator to bracket with screws. Adjust your drill's torque setting to prevent stripping. Repeat Steps 12—14 at other bracket.



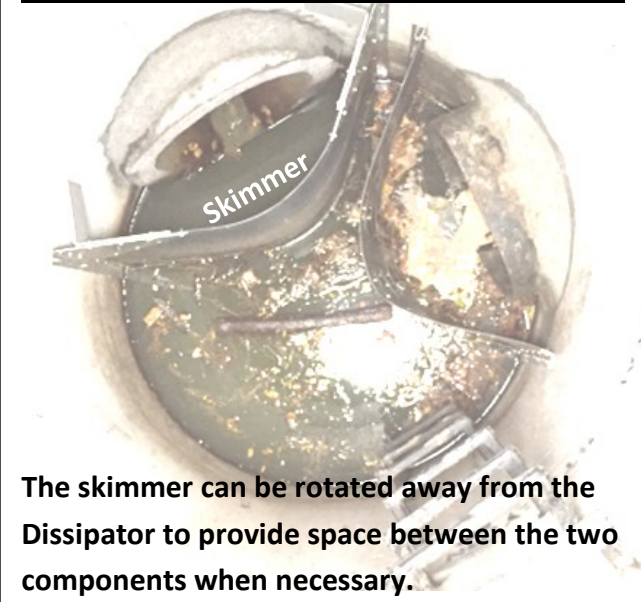
↓ INSTALLATION TIPS ↓

When avoiding obstructions:

The Dissipator brackets can be moved inward or outward (relative to the pipe). However, each bracket should be located an equal distance from the pipe.



When installing Dissipator(s) with a skimmer:



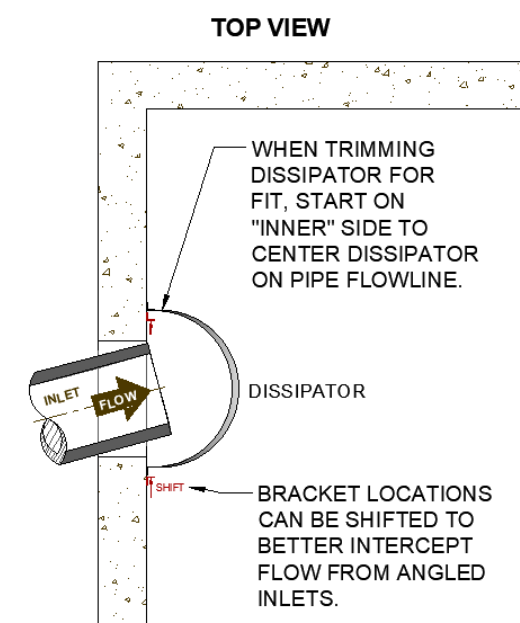
When installing Dissipator(s) with a skimmer:

Remove Dissipator(s) from structure prior to Step 14 to provide room for the skimmer installation.



When installing a Dissipator over an angled inlet:

The installer can take advantage of The Preserver's install flexibility by adjusting the bracket locations and trimming the "inner" side of the Dissipator more than the "outer" side (see notes on figure to the right). Be sure to maintain the minimum required distance between the pipe and Dissipator (greater of 15" or half the pipe diameter).



Pat. US 9,752,600 B2
Pat. CA 2,893,173

Questions? Call 877-773-0073

Installer is responsible for meeting all safety and confined space entry requirements.

PROUDLY MADE IN THE USA
QUALITY MATERIALS:
• 100% recycled HDPE
• Stainless steel brackets
• Stainless steel hardware



Bowman
Construction
Supply Inc.



Quick
Supply Co.



Cascade
GEOSYNTHETICS

LOCATIONS & CONTACT INFO

ASP ENTERPRISES

aspent.com
salesasp@aspent.com

BOWMAN CONSTRUCTION SUPPLY

bowmanconstructionsupply.com
salesbcs@bowmanconstructionsupply.com

QUICK SUPPLY CO.

quicksupplyco.com
salesquick@quicksupplyco.com

CASCADE GEOSYNTHETICS

cascadegeos.com
salescascade@cascadegeos.com

St. Louis, MO 636.343.4357
Omaha, NE 402.861.8579
Kansas City, MO 816.554.1191
Wichita, KS 316.393.1554

Denver, CO 303.696.8960
Colorado Springs, CO 719.257.7840
Loveland, CO 970.535.0863

Des Moines, IA
515.289.1271

Portland, OR
971.339.1020

SOLUTIONS WE SUPPLY

GEOSYNTHETICS

Filter Fabrics

Stabilization Fabrics

Geogrids

- Road Grids
- Wall Grids
- Slope Stabilization

Specialty Fabrics

Composite Geomembranes

- GCLs, PVC, HDPE, LLDPE, EPDM, Granular Bentonite

SEDIMENT CONTROL

Inlet Protection

- Grated Inlet, Curb Inlet, Area Inlet Protection

Ditch Checks

- Triangle Silt Dike
- GeoRidge

Perimeter Protection

- High and Low-Porosity Silt Fence, Straw Wattles, Silt Socks
- Safety Fence

Flocculants & Water Treatment

- Polymer-Based & Natural Flocculants

Sediment Basin Skimmers

Dewatering Bags

Trackout Control

- FODS
- Rumble Grates

Turbidity Curtains

EROSION CONTROL

Basic Hydraulically Applied Mulches

- Wood
- Paper
- Blends
- Straw

High-Performance Hydraulically

Applied Products

- BFM
- FGM
- Additives & Tackifiers

Temporary Erosion Control Blankets

- Coir & Jute Mat/Nettings
- Short-Term ECBs
- Extended-Term ECBs

Permanent Erosion Control Blankets

- Turf Reinforcement Mats
- HP-TRMs
- Anchor Reinforced Vegetation System

Structural BMPs

- Transition Mats
- Geoweb Cellular Confinement
- Composite Vegetated Armor System
- Flex MSE Vegetated Wall System
- Articulated Concrete Block
- Gabions
- Grout-Filled Geotextile Mats

Vegetation Establishment

- Native Seed & Turf Seed
- Fertilizers
- Organic Soil Additives
- Stratavault Soil Cells

STORMWATER MANAGEMENT

Water Quality

- Inlet Filter Boxes
- Pre-Treatment Chamber
- Nutrient Separating Baffle Boxes
- High-Flow Biofiltration Media
- Hydrodynamic Separators
- Stratavault

Water Quantity

- Modular Underground Storage Systems
- Chamber Detention Systems

Drainage

- HDPE Swale Liner
- Pipe & Fittings
- Drainage Composites
- Strip Drain

Inlet Structures

- PVC
- Drain Basins, In-Line Drains
- Landscape

Permeable Pavers

- Permeable Articulating Concrete Block
- Grass Pavers
- Gravel Pavers
- Concrete Pavers

SPECIALTY

Natural & Synthetic Coir Fiber Logs

Vegetated Reinforced Soil Slopes

Soil Anchors

Root Barrier System

AquaBlok

Muscle Wall

We are full line distributors of construction materials for all project types. Contact us for assistance with a project. From specification and development to installation and completion, we're here to help with all of your site solution needs.

GEOSYNTHETICS | EROSION CONTROL | STORMWATER MANAGEMENT
SEDIMENT CONTROL | REVEGETATION & SOIL AMENDMENTS