

RESTORATION TRIO of SUCCESS

The Reclamation trio – Biosol, Humate, and Mycorrhizae offers a top-tier solution for fertilizing and improving soils during planting or transplanting. This powerful combination enhances root mass and strength, enabling plants to absorb water and nutrients more efficiently while minimizing transplant shock. By integrating Biosol Forte, Menefee Humate, and MycoApply Endo/Ecto Granular Mycorrhizae, the soil and plants gain improved moisture retention. The outcome is healthier, deeper-rooted plants that thrive with less water in native soil.

Biosol Forte

Function: A biologically active, slow-release organic fertilizer made from fermented cottonseed and soybean meal. It contains **96% fungal and bacterial biomass**, promoting microbial life, humus formation, and root development

Key Benefits:

- ✓ Stable organic matter (>74%) with long-lasting nutrients.
- ✓ Enhances microbial biomass and soil fertility.
- ✓ Contains chitin (supports disease resistance).
- ✓ USDA Bio Preferred and EPA-approved for environmentally sensitive areas.

Humate

Function: Humates are full of humic and fulvic acids derived from decomposed organic matter. They **stimulate microbial activity**, improve nutrient uptake, and enhance soil structure.

Key Benefits:

- ✓ High biological activity (especially fulvic acids).
- ✓ Improves mineral availability and root permeability.
- ✓ Supports long-term soil health and nutrient cycling.

Mycorrhizae

Function: Symbiotic fungi that attach to plant roots and extend their nutrient and water absorption capacity by up to **100x**.

Key Benefits:

- ✓ Enhances nutrient uptake of tied up soil nutrients.
- ✓ Improves resistance to root diseases.
- ✓ Reduces transplant stress.

Before



Two Months After



Contact Us

10801 E. 54th Avenue, Denver, CO 80239
303.696.8960

wefixdirt.com | info@wefixdirt.com



Case Study:

Site: Douglas County & Lennar Homes at Red Hawk:

Contractor: DTEC (Down to Earth Compliance)

Problem:

One year after initial seeding vegetation was 1 plant per sq. yard to 1 plant per 5 sq yards. The property owner/ Douglas County wanted to rip out all blanket and start over with bringing in topsoil. The original estimate for this work was over \$120,000.00

The contractor offered to apply Biosol Forte, Menefee Humate and Mycorrhizae to the existing soil with seed. **This would save the landowner over \$75,000. The answer was obvious!**

The Solution to establish vegetation:

- **Biosol Forte at 1800 lbs. per acre**
- **Menefee Humate at 900 lbs. per acre**
- **MycoApply granular Endo at 20 lbs. per acre**

Application Method:

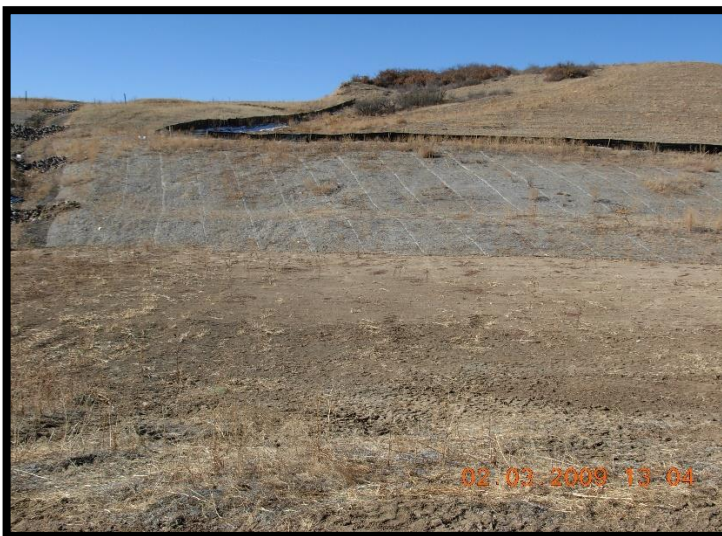
Drill & Broadcast (doubled seed rates) seeded on flat areas with some hydroseeding on steep slopes.



BEFORE



AFTER



Why This Trio Is Ideal for Native Plants

Native plants evolved in **low-input, biologically diverse soils**. They don't need synthetic fertilizers—they need:

- ✓ **Stable organic matter** (Biosol Forte)
- ✓ **Essential organic acids** (Humate)
- ✓ **Symbiotic fungal networks** (Mycorrhizae)

This trio mimics the natural soil-building processes found in native soils, making it ideal for restoration, conservation, and regenerative gardening.



Bowman
Construction
Supply Inc.



Quick
Supply Co.



Cascade
GEOSYNTHETICS

LOCATIONS & CONTACT INFO

ASP ENTERPRISES

aspent.com
salesasp@aspent.com

BOWMAN CONSTRUCTION SUPPLY

bowmanconstructionsupply.com
salesbcs@bowmanconstructionsupply.com

QUICK SUPPLY CO.

quicksupplyco.com
salesquick@quicksupplyco.com

CASCADE GEOSYNTHETICS

cascadegeos.com
salescascade@cascadegeos.com

St. Louis, MO 636.343.4357
Omaha, NE 402.861.8579
Kansas City, MO 816.554.1191
Wichita, KS 316.393.1554

Denver, CO 303.696.8960
Colorado Springs, CO 719.257.7840
Loveland, CO 970.535.0863

Des Moines, IA
515.289.1271

Portland, OR
971.339.1020

SOLUTIONS WE SUPPLY

GEOSYNTHETICS

Filter Fabrics

Stabilization Fabrics

Geogrids

- Road Grids
- Wall Grids
- Slope Stabilization

Specialty Fabrics

Composite Geomembranes

- GCLs, PVC, HDPE, LLDPE, EPDM, Granular Bentonite

SEDIMENT CONTROL

Inlet Protection

- Grated Inlet, Curb Inlet, Area Inlet Protection

Ditch Checks

- Triangle Silt Dike
- GeoRidge

Perimeter Protection

- High and Low-Porosity Silt Fence, Straw Wattles, Silt Socks
- Safety Fence

Flocculants & Water Treatment

- Polymer-Based & Natural Flocculants

Sediment Basin Skimmers

Dewatering Bags

Trackout Control

- FODS
- Rumble Grates

Turbidity Curtains

EROSION CONTROL

Basic Hydraulically Applied Mulches

- Wood
- Paper
- Blends
- Straw

High-Performance Hydraulically

Applied Products

- BFM
- FGM
- Additives & Tackifiers

Temporary Erosion Control Blankets

- Coir & Jute Mat/Nettings
- Short-Term ECBs
- Extended-Term ECBs

Permanent Erosion Control Blankets

- Turf Reinforcement Mats
- HP-TRMs
- Anchor Reinforced Vegetation System

Structural BMPs

- Transition Mats
- Geoweb Cellular Confinement
- Composite Vegetated Armor System
- Flex MSE Vegetated Wall System
- Articulated Concrete Block
- Gabions
- Grout-Filled Geotextile Mats

Vegetation Establishment

- Native Seed & Turf Seed
- Fertilizers
- Organic Soil Additives
- Stratavault Soil Cells

STORMWATER MANAGEMENT

Water Quality

- Inlet Filter Boxes
- Pre-Treatment Chamber
- Nutrient Separating Baffle Boxes
- High-Flow Biofiltration Media
- Hydrodynamic Separators
- Stratavault

Water Quantity

- Modular Underground Storage Systems
- Chamber Detention Systems

Drainage

- HDPE Swale Liner
- Pipe & Fittings
- Drainage Composites
- Strip Drain

Inlet Structures

- PVC
- Drain Basins, In-Line Drains
- Landscape

Permeable Pavers

- Permeable Articulating Concrete Block
- Grass Pavers
- Gravel Pavers
- Concrete Pavers

SPECIALTY

Natural & Synthetic Coir Fiber Logs

Vegetated Reinforced Soil Slopes

Soil Anchors

Root Barrier System

AquaBlok

Muscle Wall

We are full line distributors of construction materials for all project types. Contact us for assistance with a project. From specification and development to installation and completion, we're here to help with all of your site solution needs.

**GEOSYNTHETICS | EROSION CONTROL | STORMWATER MANAGEMENT
SEDIMENT CONTROL | REVEGETATION & SOIL AMENDMENTS**