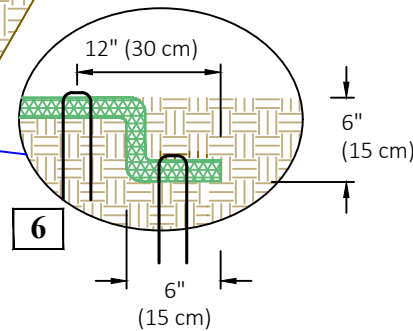
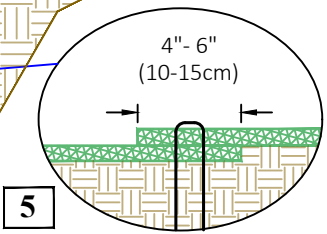
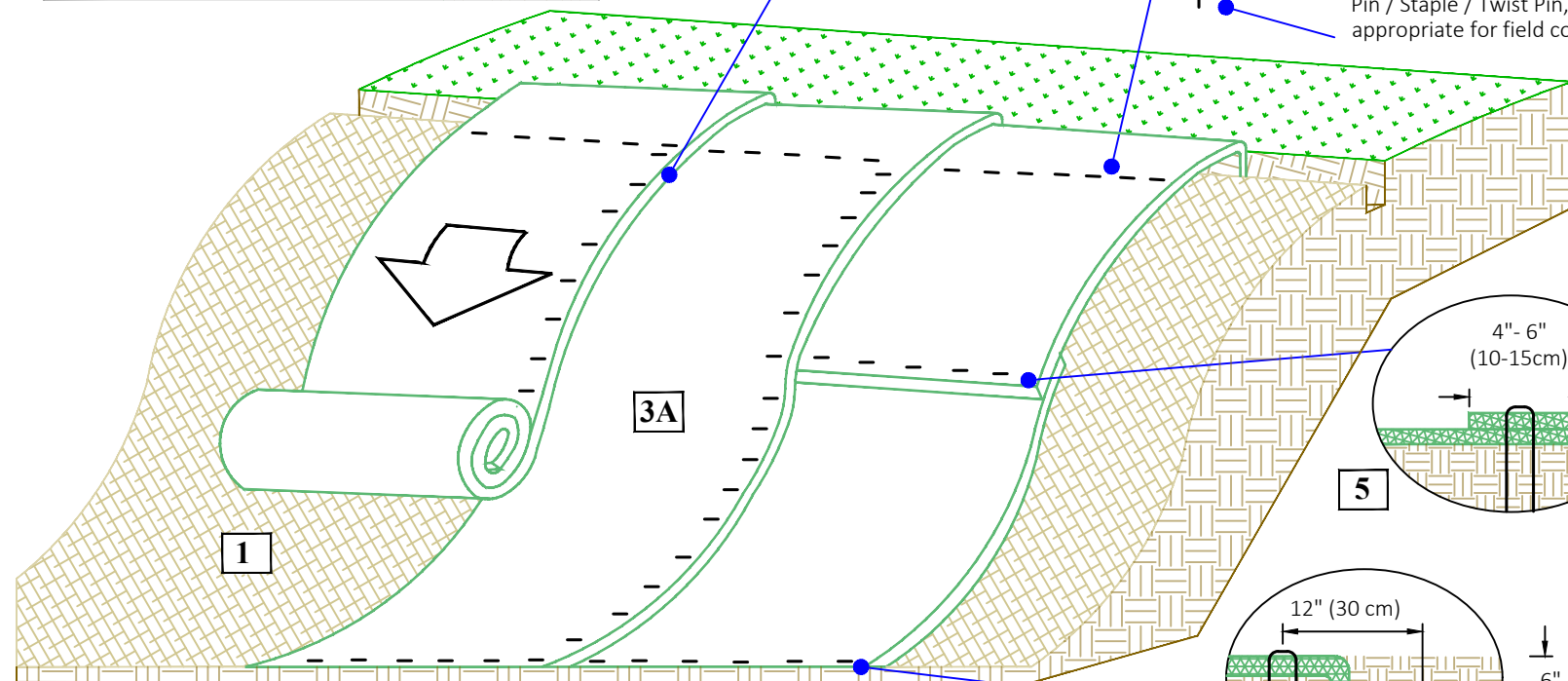


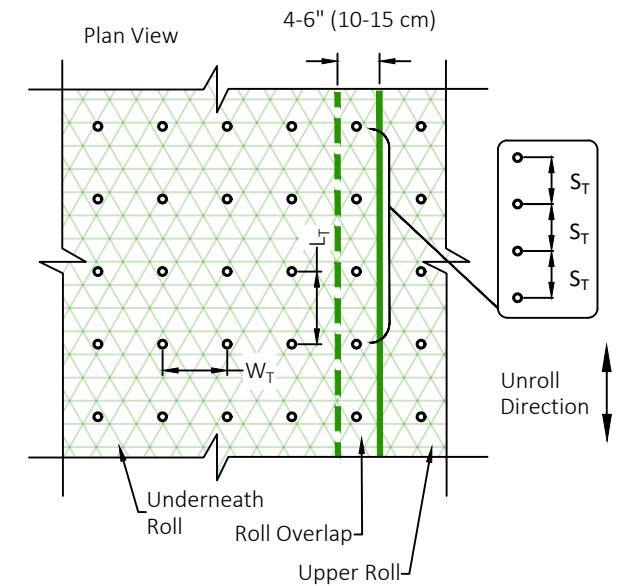
Pin / Staple / Twist Pin, as appropriate for field conditions



Instructions

1. Prepare soil before installing rolled erosion control products (RECPs), including any necessary application of lime, fertilizer, and seed. Ground surface must be free of debris, rocks, clay clods and raked smooth sufficient to allow intimate contact of the RECP with the soil over the entirety of the installation.
2. Begin at the top of the slope by anchoring the RECPs in a 6" (15 cm) deep X 6" (15 cm) wide trench. Anchor the RECPs with a row of staples/stakes/pins spaced at S_T apart in the bottom of the trench. Backfill and compact the trench after stapling and fold the roll over downslope. Secure RECPs over compacted soil with a row of staples/stakes/pins spaced at S_T apart across the width of the RECPs.
3. Roll the RECPs (A) down or (B) horizontally across the slope. When laying RECPs horizontal, a maximum of two roll widths or 16 feet, whichever is less, may be applied up the slope. If two roll widths or 16 ft is insufficient to cover the slope, material shall be placed vertically. RECPs will unroll with appropriate side against the soil surface. All RECPs must be securely fastened to soil surface by placing staples/stakes/pins in appropriate locations as shown in the staple pattern guide. RollMax RECPs and ECBs should utilize Staple Pattern C, TRMs and VMax materials should utilize Staple Pattern D.
4. The edges of parallel RECPs must be stapled with approximately 4" - 6" (10 - 15 cm) overlap.
5. Consecutive RECPs spliced down the slope must overlapped with the upstream mat atop the downstream mat (shingle style). The overlap should be 4" - 6" (10 - 15 cm).
6. At the terminal end, secure each mat across the width with a row of staples/stakes/pins spaced at S_T . If exposed to flow, foot traffic, wind uplift or other disruption, trench the terminal end in as shown in detail.
7. Fasteners should provide a minimum of twenty pounds of pullout resistance. Six-inch (10 cm) X one-inch (2.5 cm) eleven gauge staples are typically adequate. In loose soils, longer staples may be necessary, twist pins can provide the greatest pullout resistance. In hard or rocky soils, straight pins may be used where staples or twist pins are refused, provided the minimum pullout requirements are met. Bio-degradable fasteners shall not be used with TRM or HPTRM materials.

Staple Pattern Guide



• Pin / Staple / Twist Pin, as appropriate for field conditions

Dimension	Staple Pattern	
	C	D
W_T	30" (75 cm)	22" (55 cm)
L_T	30" (75 cm)	22" (55 cm)
S_T	18" (45 cm)	18" (45 cm)
Nominal Frequency	1.7 / SY	3.0 / SY
Application	ECB (Degradable)	TRM (Permanent)
Required Fastener	Min. 20# pullout	Min. 20# pullout

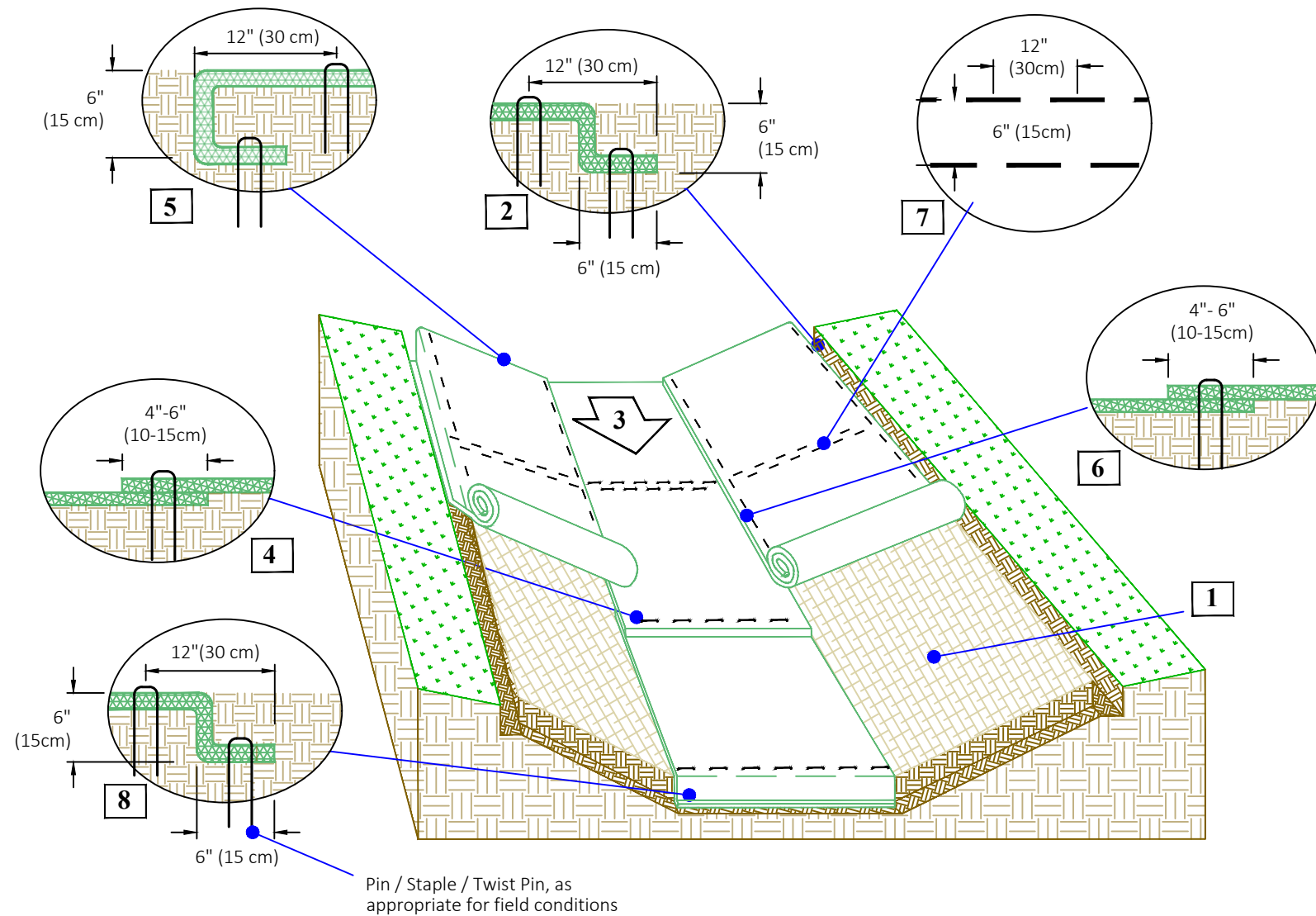
*Note: Staple Pattern A and B used prior to 8/2019 have been discontinued.



Project: Standard Slope/Rainfall Layout - ECB or TRM

Shown: Isometric View of Slope, Fastener Placement, Some Fasteners and Vegetation Omitted for Clarity, Trenching and Overlap, NTS

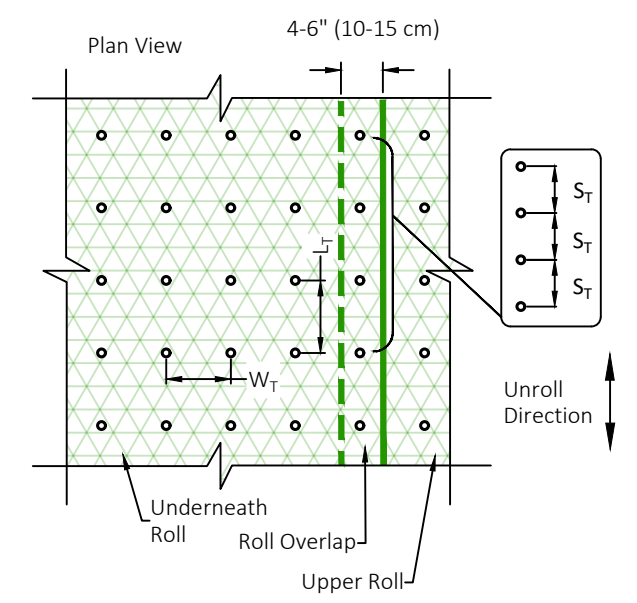
Date: 4/19/2022
 WG: 886-540-9810
www.westerngreen.com
www.westernexcelsior.com
www.nagreen.com



Instructions

1. Prepare soil before installing rolled erosion control products (RECPs), including any necessary application of lime, fertilizer, and seed. Ground surface must be free of debris, rocks, clay clods and raked smooth sufficient to allow intimate contact of the RECP with the soil over the entirety of the installation.
2. Begin at the top of the channel by anchoring the RECPs in a 6" (15 cm) deep X 6" (15 cm) wide trench with approximately 12" (30 cm) of RECPs extended beyond the up-slope portion of the trench. Use ShoreMax mat at the channel/culvert outlet as supplemental scour protection as needed. Anchor the RECPs with a row of staples/stakes/pins approximately 12" (30 cm) apart in the bottom of the trench. Backfill and compact the trench after stapling. Apply seed to the compacted soil and fold the remaining 12" (30 cm) portion of RECPs back over the seed and compacted soil. Secure RECPs over compacted soil with a row of staples/stakes/pins spaced approximately 12" (30 cm) apart across the width of the RECPs.
3. Roll center RECPs in direction of water flow in bottom of channel. RECPs will unroll with appropriate side against the soil surface. All RECPs must be securely fastened to soil surface by placing staples/stakes/pins in appropriate locations as shown in the staple pattern guide.
4. Place consecutive RECPs end-over-end (Shingle style) with a 4" - 6" (10 - 15 cm) overlap. Use a double row of staples staggered 4" apart and 4" on center to secure RECPs.
5. Full length edge of RECPs at top of side slopes must be anchored with a row of staples/stakes/pins spaced at S_T apart in a 6" (15 cm) deep X 6" (15 cm) wide trench. Backfill and compact the trench after stapling.
6. Adjacent RECPs must be overlapped approximately 4" - 6" (10 - 15 cm) and secured with staples/stakes/pins at S_T .
7. In high flow channel applications a staple check slot is recommended at 30 to 40 foot (9 -12m) intervals. Use a double row of staples staggered 6" (15 cm) apart and 12" (30 cm) on center over entire width of the channel.
8. The terminal end of the RECPs must be anchored with a row of staples/stakes/pins spaced at S_T apart in a 6" (15 cm) deep X 6" (15 cm) wide trench. Backfill and compact the trench after stapling.
9. Fasteners should provide a minimum of twenty pounds of pullout resistance. Six-inch (10 cm) X one-inch (2.5 cm) eleven gauge staples are typically adequate. In loose soils, longer staples may be necessary, twist pins can provide the greatest pullout resistance. In hard or rocky soils, straight pins may be used where staples or twist pins are refused, provided the minimum pullout requirements are met. Bio-degradable fasteners shall not be used with VMax (TRM) or TMax (HPTRM) materials.

Staple Pattern Guide



• Pin / Staple / Twist Pin, as appropriate for field conditions

Dimension	Staple Pattern
W_T	20" (50 cm)
L_T	20" (50 cm)
S_T	18" (45 cm)
Nominal Frequency	3.8 / SY
Required Fastener	Min. 20# Pullout

CRITICAL POINTS
 A. Overlaps and Seams
 B. Projected Water Line
 C. Channel Bottom/Side Slope Vertices

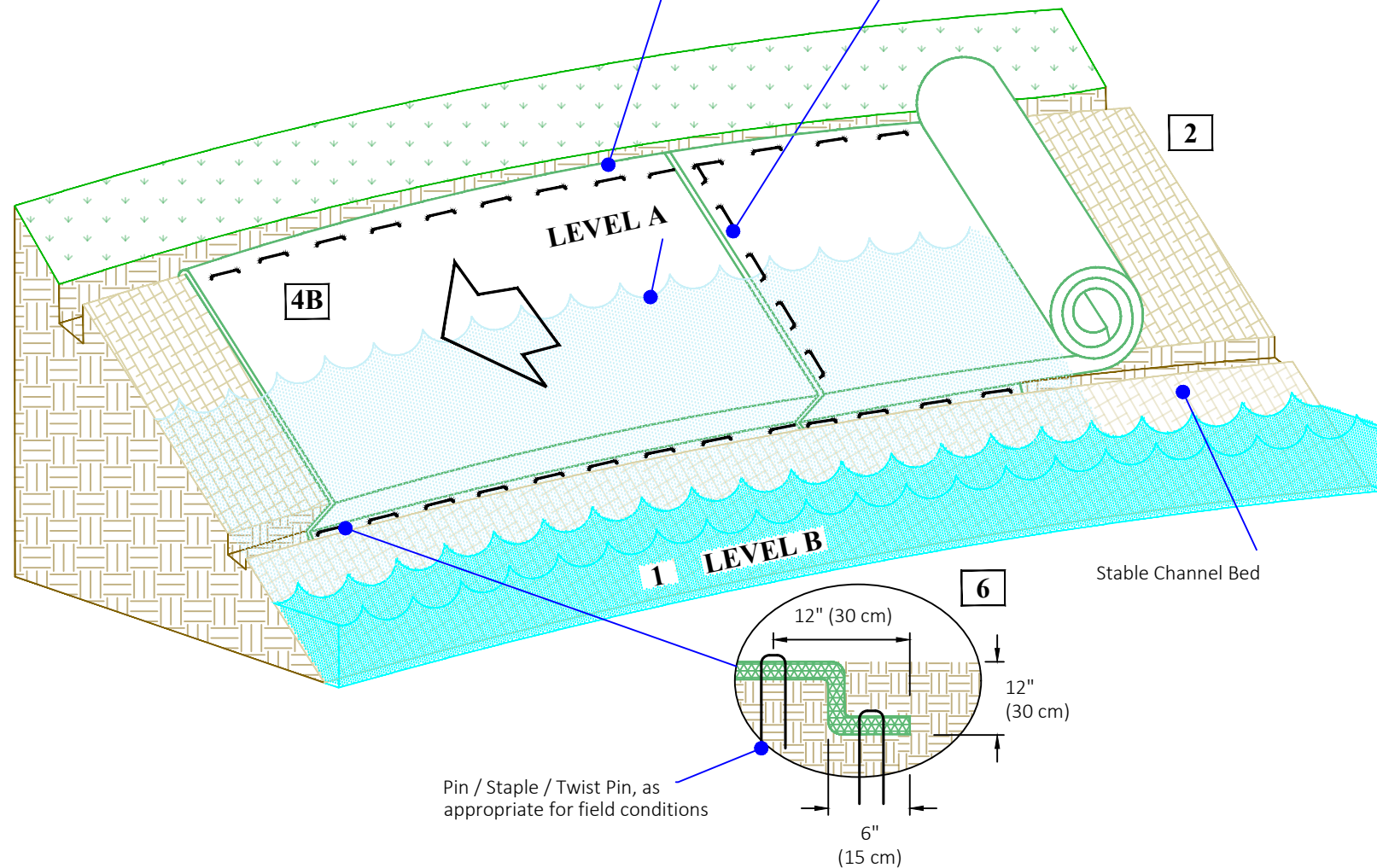
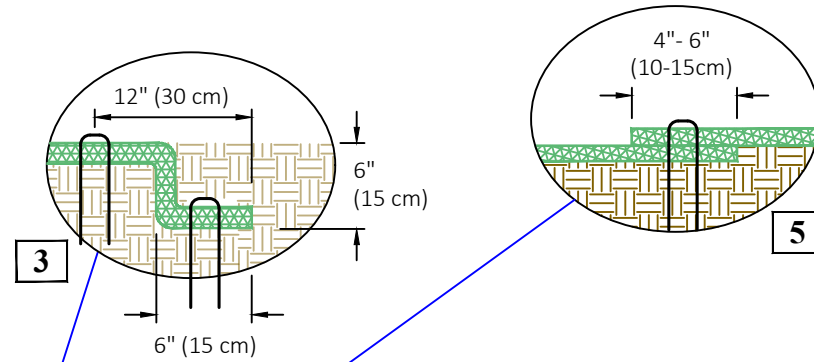
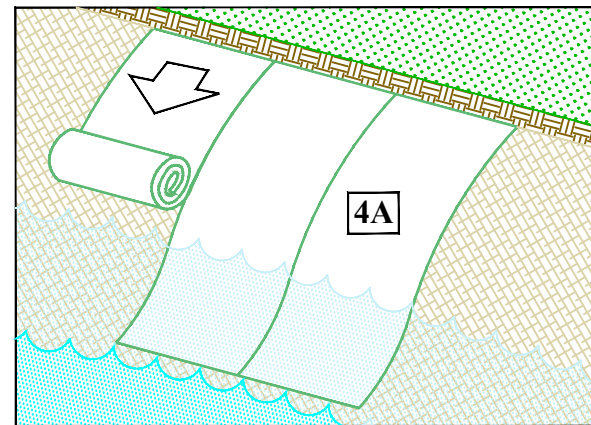


NOTES:
 *Horizontal staple spacing should be altered if necessary to allow staples to secure the critical points along the channel surface.



Project: Standard Slope/Rainfall Layout - ECB or TRM
 Shown: Isometric View of Slope, Fastener Placement, Some Fasteners and Vegetation Omitted for Clarity, Trenching and Overlap, NTS

Date: 4/19/2022
 WG: 886-540-9810
 www.westerngreen.com
 www.westernexcelsior.com
 www.nagreen.com

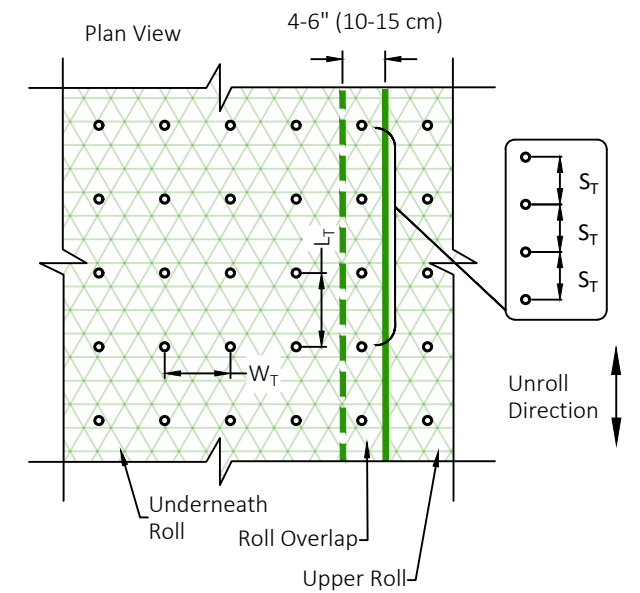


Pin / Staple / Twist Pin, as appropriate for field conditions

Instructions

1. For easier installation, lower water level from Level A to Level B before installation.
2. Prepare soil before installing rolled erosion control products (RECPs), including any necessary application of lime, fertilizer, and seed. Ground surface must be free of debris, rocks, clay clods and raked smooth sufficient to allow intimate contact of the RECP with the soil over the entirety of the installation.
3. Begin at the top of the shoreline by anchoring the RECPs in a 6" (15 cm) deep X 6" (15 cm) wide trench. Anchor the RECPs with a row of staples/stakes/pins spaced at S_T apart in the bottom of the trench. Backfill and compact the trench after stapling.
4. Roll RECPs either (A) down the shoreline for long banks (top to bottom) or (B) horizontally across the shoreline slope. RECPs will unroll with appropriate side against the soil surface. VMax TRMs should always be installed parallel to flow. All RECPs must be securely fastened to soil surface by placing staples/stakes/pins in appropriate locations as shown in the staple pattern guide.
5. The edges of all horizontal and vertical seams must be stapled with approximately 4" - 6" (10 - 15 cm) overlap. Note: *In streambank applications, seam overlaps should be shingled in the predominant flow direction.
6. The edges of the RECPs at or below normal water level must be anchored by placing the RECP's in a 12" (30 cm) deep X 6" (15 cm) wide anchor trench. Anchor the RECPs with a row of staples/stakes/pins spaced approximately 12"(30cm) apart in the trench. Backfill and compact the trench after stapling (stone or soil may be used as backfill). For installation at or below normal water level, use of ShoreMax mat on top of the RECP or geotextile underneath is likely required for sections below the normal water line.
7. Fasteners should provide a minimum of twenty pounds of pullout resistance. Six-inch (10 cm) X one-inch (2.5 cm) eleven gauge staples are typically adequate. In loose soils, longer staples may be necessary, twist pins can provide the greatest pullout resistance. In hard or rocky soils, straight pins may be used where staples or twist pins are refused, provided the minimum pullout requirements are met. Bio-degradable fasteners shall not be used with VMax (TRM) or TMax (HPTRM) materials.

Staple Pattern Guide



• Pin / Staple / Twist Pin, as appropriate for field conditions

Staple Pattern	
Dimension	E
W_T	20" (50 cm)
L_T	20" (50 cm)
S_T	18" (45 cm)
Nominal Frequency	3.8 / SY
Required Fastener	Min. 20# Pullout



Project: Standard Channel Bank Layout - ECB or TRM

Shown: Isometric View of Slope, Fastener Placement, Some Fasteners and Vegetation Omitted for Clarity, Trenching and Overlap, NTS

Date: 4/19/2022
 WG: 886-540-9810
www.westerngreen.com
www.westernexcelsior.com
www.nagreen.com



DISTRIBUTED BY:

ASP Enterprises, Quick Supply Co., Bowman Construction Supply & Cascade Geosynthetics are sister companies that serve customers from the Midwest, across the Rocky Mountains to the Pacific Northwest. Together we supply customers with a variety of environmental construction materials including erosion and sediment control, geosynthetics, stormwater management, drainage products, hardscapes and outdoor living, revegetation and soil amendments, waterproofing solutions and more.



We are full line distributors of environmental construction materials for all project types. Contact us for assistance with a project or a quote on products. From specification recommendations and project development to installation and completion, we're here to help with all of your site solution needs. Our warehouses are stocked with readily available inventory and we offer same and next-day deliveries.

ASP ENTERPRISES

aspent.com

salesasp@aspent.com

ST. LOUIS

1099 Cassens Industrial Ct.
St. Louis, MO 63026
636-343-4357

KANSAS CITY

5301 E 59th St.
Kansas City, MO 64130
816-554-1191

OMAHA

15263 Cooper St.
Omaha, NE 68138
402-861-8579

WICHITA

316-393-1554

WENTZVILLE

1906 E Service Rd. HWY 61 N
Wentzville, MO 63385
636-445-9090

QUICK SUPPLY CO.

quicksupplyco.com

salesquick@quicksupplyco.com

DES MOINES

6620 NW Toni Dr.
Des Moines, IA 50313
515-289-1271

BOWMAN CONSTRUCTION SUPPLY

bowmanconstructionsupply.com

salesbcs@bowmanconstructionsupply.com

DENVER

10801 E. 54th Ave.
Denver, CO 80239
303-696-8960

COLORADO SPRINGS

2445 Wayside Ct.
Colorado Springs, CO 80915
719-257-7840

LOVELAND

4495 Woods Ave.
Loveland, CO 80538
970-535-0863

CASCADE GEOSYNTHETICS

cascadageos.com

salescascade@cascadageos.com

PORTLAND

3610 N. Suttle Rd. Bldg B
Portland, OR 97217
971-339-1020

SALT LAKE CITY

425 N. Neil Armstrong Rd.
Salt Lake City, UT 84116
435-276-0820

**GEOSYNTHETICS | EROSION CONTROL | STORMWATER MANAGEMENT
REVEGETATION & SOIL AMENDMENTS | SEDIMENT CONTROL | HARDSCAPES**