



NextGel™ PORCELAIN PAVER JOINTING SAND

**A FASTER & CLEANER SOLUTION
FOR GROUTING PORCELAIN PAVERS**



• **INNOVATIVE
GROUT ALTERNATIVE**

• **NO MIXING
REQUIRED**

• **FAST & EASY**

• **COLOR
CONSISTENT
EFFLORESCENCE-FREE**



**Residential &
Commercial Use**

**Convenient 25 lb bag
covers 100 sq. ft.**

**For joints from
1/16" to 1/2"**

NextGel™ PORCELAIN PAVER JOINTING SAND



1 SPREAD THE SAND

- Spread product evenly on a small surface. Using the street broom, fill joints completely. Spread sand over short distances.



2 COMPACT THE SAND

- Pass the paver roller compactor over the entire surface to compact the sand.
- Add more product and spread to fill joints again.
- Pass the paver roller compactor over the entire surface a second time.
- **IMPORTANT:** Multiple passes may be required until joint saturation is reached.
- Remove excess sand from the surface with the broom.
- Level the height of the sand with the leaf blower.
- Sand level must be at least 1/8" below top of tiles.



3 ACTIVATE BY WATERING

- Using the water sprayer, starting from bottom of the slope, quickly water the joints of a 100 sq. ft. section* to set the sand (10 to 15 seconds).
- Immediately wet the same section where joints have absorbed more water.
- Check for water accumulation at the surface of the jointing sand as a cue to stop watering. Wait until there is no free water at the surface of the joint and verify the depth of activation.

NECESSARY TOOLS

- Street broom with semi-rigid bristles.
- Paver roller compactor.
- Hand tamper may be needed in restricted areas where using heavier equipment may not be possible.
- Leaf blower.
- Handheld or backpack sprayer for precise watering of the joints.



ULTRA-CLEAN

HAZE & DUST FREE

TECHNOLOGY



CONTROLLED TESTING IN TECHNISEAL R&D LAB

Techniseal
NextGel™ PORCELAIN
PAVER JOINTING SAND

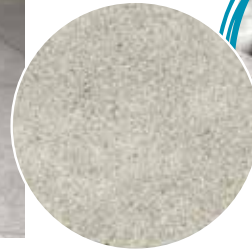
COMPETITOR
JOINTING SAND

If NextGel™ PORCELAIN PAVER JOINTING SAND is activated at 75% or more of its depth stop watering. If activated at less than 75%, water for an additional 5 seconds and check again after 30 seconds.

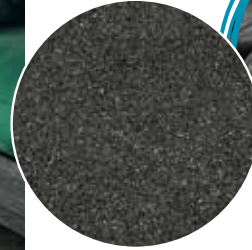
*NextGel™ PORCELAIN PAVER JOINTING SAND is fast to activate. It is very easy to overwater installations with large tiles. Carefully track the watering time during the activation process.



AVAILABLE IN:



**White
Pearl**



**Black
Onyx**



**Grey
Moonstone**



**Beige
Agate**

A curved outdoor patio with stone tiles and modern furniture. The patio is made of large, rectangular stone tiles with a natural, textured appearance. A curved, light-colored concrete or stone border runs along the edge of the patio. In the background, there is a modern outdoor sofa with light-colored cushions and a dark frame, and a small table. The background shows a body of water with a sunset or sunrise sky in shades of orange and red.

**SPECIFICALLY
DESIGNED** for your
PORCELAIN PROJECTS
with **Ultra-Clean Technology**



 **Techniseal**

NextGel PORCELAIN
PAVER JOINTING SAND



Residential &
Commercial Use

- Innovative great alternative
- Color consistent - Effluorescence-free
- No mixing required, fast and easy

FOR JOINTS FROM 1/16" TO 1/2"

NET
WEIGHT
25 LBS



A FASTER & CLEANER WAY WITH TECHNISEAL'S SYSTEM FOR PORCELAIN PAVERS



NextGel PORCELAIN PAVER JOINTING SAND

COLOR	CODE	WEIGHT
White Pearl	141000066	25 lbs
Black Onyx	141000065	25 lbs
Grey Moonstone	141000064	25 lbs
Beige Agate	141000067	25 lbs

CAUTIONS SPECIFIC TO PORCELAIN PAVERS

- Mechanical compaction should be done until joint is saturated. Several passes may be required.
- Porcelain pavers should never be installed with a porcelain to porcelain contact.

Contact your local Techniseal® representative, visit techniseal.com or dial 1 800 465-7325 for more details.





Bowman
Construction
Supply Inc.



Quick
Supply Co.



Cascade
GEOSYNTHETICS

LOCATIONS & CONTACT INFO

ASP ENTERPRISES

aspent.com
salesasp@aspent.com

BOWMAN CONSTRUCTION SUPPLY

bowmanconstructionsupply.com
salesbcs@bowmanconstructionsupply.com

QUICK SUPPLY CO.

quicksupplyco.com
salesquick@quicksupplyco.com

CASCADE GEOSYNTHETICS

cascadegeos.com
salescascade@cascadegeos.com

St. Louis, MO 636.343.4357
Omaha, NE 402.861.8579
Kansas City, MO 816.554.1191
Wichita, KS 316.393.1554

Denver, CO 303.696.8960
Colorado Springs, CO 719.257.7840
Loveland, CO 970.535.0863

Des Moines, IA
515.289.1271

Portland, OR
971.339.1020

SOLUTIONS WE SUPPLY

GEOSYNTHETICS

Filter Fabrics

Stabilization Fabrics

Geogrids

- Road Grids
- Wall Grids
- Slope Stabilization

Specialty Fabrics

Composite Geomembranes

- GCLs, PVC, HDPE, LLDPE, EPDM, Granular Bentonite

SEDIMENT CONTROL

Inlet Protection

- Grated Inlet, Curb Inlet, Area Inlet Protection

Ditch Checks

- Triangle Silt Dike
- GeoRidge

Perimeter Protection

- High and Low-Porosity Silt Fence, Straw Wattles, Silt Socks
- Safety Fence

Flocculants & Water Treatment

- Polymer-Based & Natural Flocculants

Sediment Basin Skimmers

Dewatering Bags

Trackout Control

- FODS
- Rumble Grates

Turbidity Curtains

EROSION CONTROL

Basic Hydraulically Applied Mulches

- Wood
- Paper
- Blends
- Straw

High-Performance Hydraulically

Applied Products

- BFM
- FGM
- Additives & Tackifiers

Temporary Erosion Control Blankets

- Coir & Jute Mat/Nettings
- Short-Term ECBs
- Extended-Term ECBs

Permanent Erosion Control Blankets

- Turf Reinforcement Mats
- HP-TRMs
- Anchor Reinforced Vegetation System

Structural BMPs

- Transition Mats
- Geoweb Cellular Confinement
- Composite Vegetated Armor System
- Flex MSE Vegetated Wall System
- Articulated Concrete Block
- Gabions
- Grout-Filled Geotextile Mats

Vegetation Establishment

- Native Seed & Turf Seed
- Fertilizers
- Organic Soil Additives
- Stratavault Soil Cells

STORMWATER MANAGEMENT

Water Quality

- Inlet Filter Boxes
- Pre-Treatment Chamber
- Nutrient Separating Baffle Boxes
- High-Flow Biofiltration Media
- Hydrodynamic Separators
- Stratavault

Water Quantity

- Modular Underground Storage Systems
- Chamber Detention Systems

Drainage

- HDPE Swale Liner
- Pipe & Fittings
- Drainage Composites
- Strip Drain

Inlet Structures

- PVC
- Drain Basins, In-Line Drains
- Landscape

Permeable Pavers

- Permeable Articulating Concrete Block
- Grass Pavers
- Gravel Pavers
- Concrete Pavers

SPECIALTY

Natural & Synthetic Coir Fiber Logs

Vegetated Reinforced Soil Slopes

Soil Anchors

Root Barrier System

AquaBlok

Muscle Wall

We are full line distributors of construction materials for all project types. Contact us for assistance with a project. From specification and development to installation and completion, we're here to help with all of your site solution needs.

GEOSYNTHETICS | EROSION CONTROL | STORMWATER MANAGEMENT
SEDIMENT CONTROL | REVEGETATION & SOIL AMENDMENTS