

MATERIAL PROPERTY DATA SHEET



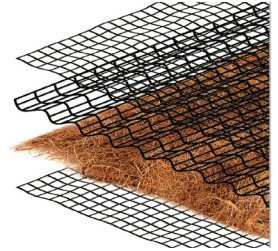
VMax[®] C350[™]

Permanent • Triple Net • Organic Fiber Matrix •
Turf Reinforcement Mat

DESCRIPTION

C350 Turf Reinforcement Mat (TRM) is composed of 100% coconut fibers mechanically (stitch) bound between a three-dimensional UV stabilized, heavy duty synthetic net structure. Stitching is secured on two-inch centers using UV stabilized, synthetic thread. C350 is a permanent, three-dimensional TRM that provides immediate erosion protection and long-term turf reinforcement and is intended for applications requiring erosion protection for greater than thirty-six months.

Each roll of C350 is made in the USA and manufactured under Western Green's Quality Assurance Program to ensure a continuous distribution of fibers and consistent thickness.



Material Content	
Matrix	Coconut
Netting	Top Net: Heavyweight, UV stable
	Middle Net: Corrugated Ultra-Heavyweight, UV stable
	Bottom Net: Heavyweight, UV stable
Thread	Synthetic, UV Stable

Standard Roll Sizes				
Width	8 ft	(2.4 m)	6.5 ft	(2.0 m)
Length	90 ft	(27.4 m)	55.5 ft	(17.0 m)
Weight ± 10%	74 lb	(34.0 kg)	37 lb	(17.0 kg)
Area	80 sy	(66.9 m ²)	40 sy	(33.4 m ²)

Material available in custom roll sizes

Approvals & Classification	
Classification	FHWA: Type 5.C / ECTC: 5.D
TTI Approvals	Class 2 Type H
NTPEP Number	ECP-2020-01-14

Disclaimer: The information contained herein may represent product index data, performance ratings, bench scale testing or other material utility quantifications. Each representation may have unique utility and limitations. Every effort has been made to ensure accuracy, however, no warranty is claimed and no liability shall be assumed by Western Green or its affiliates regarding the completeness, accuracy or fitness of these values for any particular application or interpretation. While testing methods are provided for reference, values shown may be derived from interpolation or adjustment to be representative of intended use. For further information, please feel free to contact Western Green.

©2023, North American Green is a registered trademark from Western Green. Certain products and/or applications described or illustrated herein are protected under one or more U.S. patents. Other U.S. patents are pending, and certain foreign patents and patent applications may also exist. Trademark rights also apply as indicated herein. Final determination of the suitability of any information or material for the use contemplated, and its manner of use, is the sole responsibility of the user. Printed in the

Index Property	Test Method	Typical	
Thickness	ASTM D6525	0.58 in.	(15 mm)
Mass/Unit Area	ASTM D6566	15.0 oz/sy	(500 g/sm)
Tensile Strength – MD	ASTM D6818	750 lbs/ft	(10.9 kN/m)
Tensile Strength – TD	ASTM D6818	750 lbs/ft	(10.9 kN/m)
Elongation - MD	ASTM D6818	30%	
Elongation – TD	ASTM D6818	20%	
UV Stability	ASTM D4355	80% @1000 hr	
Light Penetration	ASTM D6567	10%	
Biomass Improvement	ASTM D7322	350%	
Specific Gravity	ASTM D792	57.4 lb/ft ³	(0.92 g/cm ³)
Porosity	ECTC	N/A	

Design Parameters		
Property	Unvegetated	Vegetated ³
RUSLE C Factor ²	0.05	N/A
Slope Maximum Gradient ¹	0.5H:1V	0.5H:1V
Permissible Shear Stress ²	3.2 psf (155 Pa)	12.0 psf (575 Pa)
Permissible Velocity ²	10.5 fps (3.2 m/s)	18.0 fps (5.5 m/s)
τ_{veg} / τ_{TRM} (HEC-15)	N/A	0.44

Manning's n Roughness (HEC-15)		
τ_{lower}	τ_{mid}	τ_{upper}
0.035	0.032	0.027

1 Maximum Gradient a recommendation for typical installations.

2 Hydraulic thresholds compliant with ASTM D6459/D6460 but generalized for typical applications.

3 Vegetated values dependent on established stand of vegetation



Rev. 4.2023

Scan for additional and updated product information, or [click here](#).





DISTRIBUTED BY:

ASP Enterprises, Quick Supply Co., Bowman Construction Supply & Cascade Geosynthetics are sister companies that serve customers from the Midwest, across the Rocky Mountains to the Pacific Northwest. Together we supply customers with a variety of environmental construction materials including erosion and sediment control, geosynthetics, stormwater management, drainage products, hardscapes and outdoor living, revegetation and soil amendments, waterproofing solutions and more.



We are full line distributors of environmental construction materials for all project types. Contact us for assistance with a project or a quote on products. From specification recommendations and project development to installation and completion, we're here to help with all of your site solution needs. Our warehouses are stocked with readily available inventory and we offer same and next-day deliveries.

ASP ENTERPRISES

aspent.com

salesasp@aspent.com

ST. LOUIS

1099 Cassens Industrial Ct.
St. Louis, MO 63026
636-343-4357

KANSAS CITY

5301 E 59th St.
Kansas City, MO 64130
816-554-1191

OMAHA

15263 Cooper St.
Omaha, NE 68138
402-861-8579

WICHITA

316-393-1554

WENTZVILLE

1906 E Service Rd. HWY 61 N
Wentzville, MO 63385
636-445-9090

QUICK SUPPLY CO.

quicksupplyco.com

salesquick@quicksupplyco.com

DES MOINES

6620 NW Toni Dr.
Des Moines, IA 50313
515-289-1271

BOWMAN CONSTRUCTION SUPPLY

bowmanconstructionsupply.com

salesbcs@bowmanconstructionsupply.com

DENVER

10801 E. 54th Ave.
Denver, CO 80239
303-696-8960

COLORADO SPRINGS

2445 Wayside Ct.
Colorado Springs, CO 80915
719-257-7840

LOVELAND

4495 Woods Ave.
Loveland, CO 80538
970-535-0863

CASCADE GEOSYNTHETICS

cascadageos.com

salescascade@cascadageos.com

PORTLAND

3610 N. Suttle Rd. Bldg B
Portland, OR 97217
971-339-1020

SALT LAKE CITY

425 N. Neil Armstrong Rd.
Salt Lake City, UT 84116
435-276-0820

**GEOSYNTHETICS | EROSION CONTROL | STORMWATER MANAGEMENT
REVEGETATION & SOIL AMENDMENTS | SEDIMENT CONTROL | HARDSCAPES**