



InstaTurf® Soft Armor products

Immediately effective, lower cost alternatives to rock riprap and other hard armor systems for permanent erosion protection.



insta-turf.com



You no longer need to wait for vegetation in order to attain maximum high-performance erosion protection.

Unlike conventional Turf Reinforcement Mats (TRMs) that offer limited erosion resistance before vegetation establishment, InstaTurf ShearForce Instant Armoring products immediately form a virtually non-erodible boundary layer on the soil surface, even under high water flow conditions, while facilitating the establishment of permanently reinforced, natural vegetation.



Unvegetated InstaTurf on Day One



Fully vegetated InstaTurf vs Rock Riprap in Channel



Fully vegetated InstaTurf

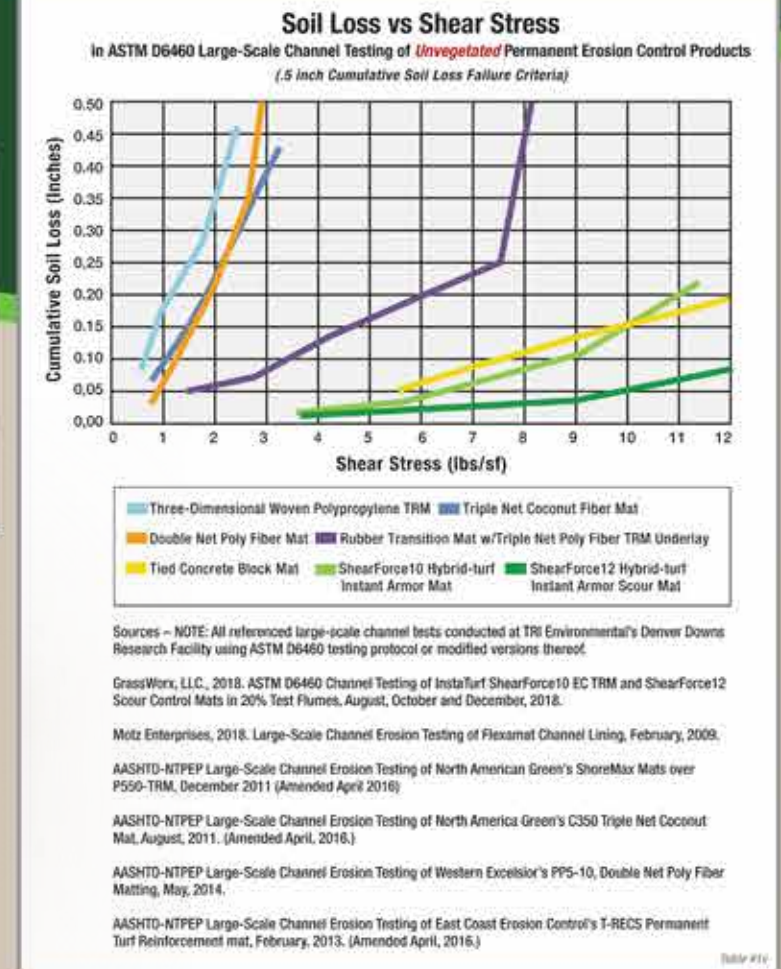
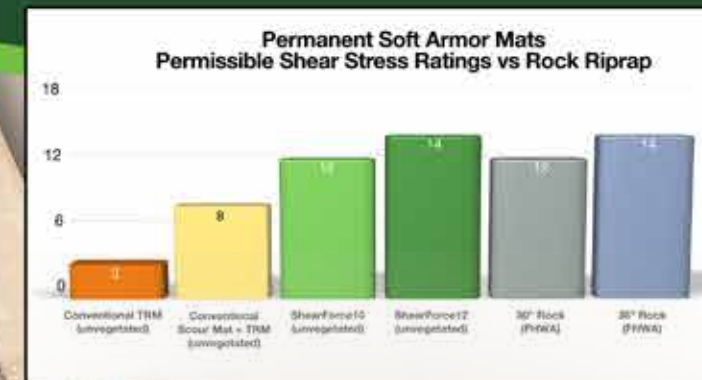
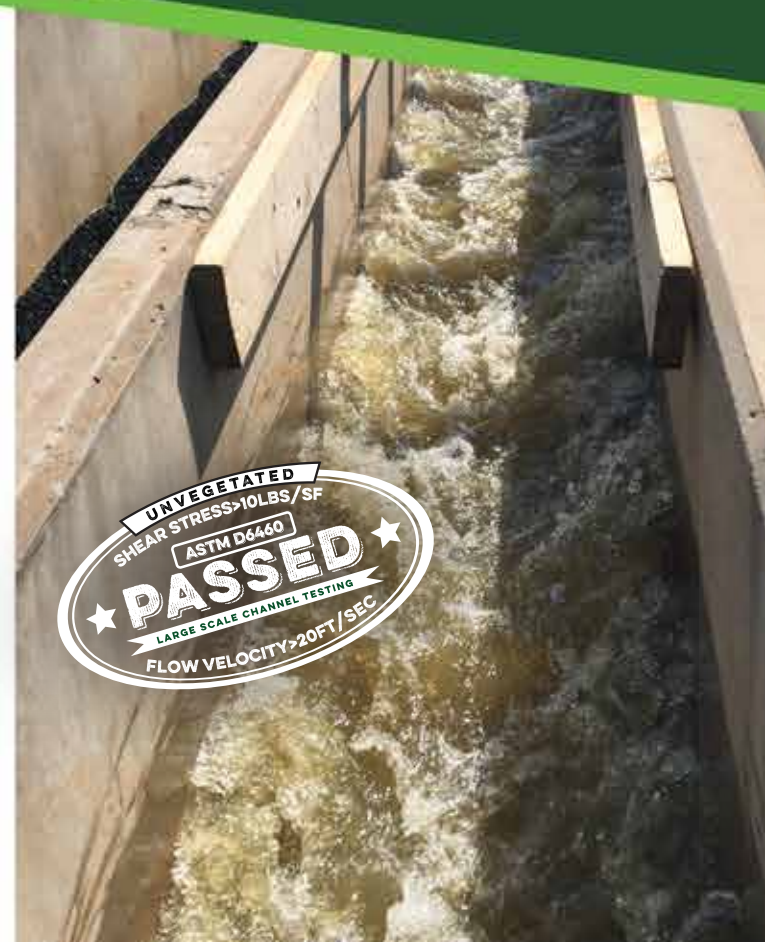
Bring it on.

Patent Pending InstaTurf® ShearForce™10 and ShearForce™12 Hybrid-turf Instant Armoring Products reduce risk by virtually eliminating erosion under very high-flow conditions from the very first day of installation.

No more worries if that hundred year storm event occurs soon after product installation...your project will be protected! Also, from day one, our products offer the added feature of appearing like real grass.

Proven in ASTM D6460 Large Scale Channel Testing without vegetation to exceed the permissible shear stress of large diameter rock! InstaTurf products are ideal for high flow channels, culvert outfalls, spillways downchutes, shorelines, and other critical areas where vegetation is slow to establish.

For more information and to see a video of the extreme testing process as well as real-world case studies, please visit our web site at www.Insta-Turf.com



Get a quote:

Contact Tim Lancaster 812-483-1532,
tim.lancaster@grassworxllc.com
or go to www.insta-turf.com to find your local InstaTurf distributor

SHEARFORCE™ 10

FEATURES AND BENEFITS

- Reinforced turf performance from day one, effective erosion protection at shear stress > 10 lbs/sf
- Immediate erosion control equivalent to large rock riprap and other hard armor, at less than ½ the cost
- Aesthetically pleasing colors; green or tan
- Environmentally friendly
- Highly UV stable and weather resistant
- ShearForce10 is available in convenient 3 ft x 45 ft, 48 lb and 6 ft x 45 ft, 96 lb rolls for easy installation
- Simple installation, just lay it and anchor it over seeded area
- Easy maintenance with standard mowing equipment



SHEARFORCE™ 12

FEATURES AND BENEFITS

- Maximum scour protection performance from day one, effective at shear stress > 12 lbs/sf
- All-in-one scour transition mat, no additional underlay required
- Cost-effective scour control alternative to large rock riprap and other hard armor systems
- Aesthetically pleasing, green grassed-in finished look
- Environmentally friendly
- Highly UV stable and weather resistant
- ShearForce12 comes in easy-to-handle 3 ft x 4 ft panels that weigh 30 lbs
- Simple installation, just lay it and anchor it over seeded area
- Easy maintenance with standard mowing equipment



InstaTurf™ Recommended Design Values		Channels/Outfalls/Spillways/Streambanks*					Slopes	Shorelines
		Manning's n	Design Shear Stress		Design Velocity		Max Gradient (h:v)	Max Wave Height
			Cohesive Soils	Non-Cohesive Soils	Cohesive Soils	Non-Cohesive Soils		
ShearForce10™ Hybrid-turf Instant Armor Mat	Unvegetated	.025 – .040	12 lbs/sf	10 lbs/sf	25 ft/sec	20 ft/sec	>1:1	<=1.0 ft
	Vegetated	.025 – .4	16 lbs/sf	14 lbs/sf	30 ft/sec	25 ft/sec	>1:1	<=1.5 ft
ShearForce12™ Hybrid-turf Instant Armor Scour Mat	Unvegetated	.025 – .040	14 lbs/sf	12 lbs/sf	30 ft/sec	25 ft/sec	>1:1	<=1.5 ft
	Vegetated	.025 – .4	18 lbs/sf	16 lbs/sf	30 ft/sec	25 ft/sec	>1:1	<=2.0 ft

* Design values are derived from ASTM D6460 large-scale channel testing on loam soils under 4 consecutive 30 min flow events in 20% gradient test flumes. A safety factor (SF) of 1.25 - 2.0 may be applied in channel lining designs to account for longer flow durations, more erodible soils, and varying side-slope gradients.

GET A QUOTE: Contact Tim Lancaster 812-483-1532, tim.lancaster@grassworxllc.com or go to www.insta-turf.com to find your local InstaTurf distributor



DISTRIBUTED BY:

ASP Enterprises, Quick Supply Co., Bowman Construction Supply & Cascade Geosynthetics are sister companies that serve customers from the Midwest, across the Rocky Mountains to the Pacific Northwest. Together we supply customers with a variety of environmental construction materials including erosion and sediment control, geosynthetics, stormwater management, drainage products, hardscapes and outdoor living, revegetation and soil amendments, waterproofing solutions and more.



We are full line distributors of environmental construction materials for all project types. Contact us for assistance with a project or a quote on products. From specification recommendations and project development to installation and completion, we're here to help with all of your site solution needs. Our warehouses are stocked with readily available inventory and we offer same and next-day deliveries.

ASP ENTERPRISES

aspent.com

salesasp@aspent.com

ST. LOUIS

1099 Cassens Industrial Ct.
St. Louis, MO 63026
636-343-4357

KANSAS CITY

5301 E 59th St.
Kansas City, MO 64130
816-554-1191

OMAHA

15263 Cooper St.
Omaha, NE 68138
402-861-8579

WICHITA

316-393-1554

WENTZVILLE

1906 E Service Rd. HWY 61 N
Wentzville, MO 63385
636-445-9090

QUICK SUPPLY CO.

quicksupplyco.com

salesquick@quicksupplyco.com

DES MOINES

6620 NW Toni Dr.
Des Moines, IA 50313
515-289-1271

BOWMAN CONSTRUCTION SUPPLY

bowmanconstructionsupply.com

salesbcs@bowmanconstructionsupply.com

DENVER

10801 E. 54th Ave.
Denver, CO 80239
303-696-8960

COLORADO SPRINGS

2445 Wayside Ct.
Colorado Springs, CO 80915
719-257-7840

LOVELAND

4495 Woods Ave.
Loveland, CO 80538
970-535-0863

CASCADE GEOSYNTHETICS

cascadageos.com

salescascade@cascadageos.com

PORTLAND

3610 N. Suttle Rd. Bldg B
Portland, OR 97217
971-339-1020

SALT LAKE CITY

425 N. Neil Armstrong Rd.
Salt Lake City, UT 84116
435-276-0820

**GEOSYNTHETICS | EROSION CONTROL | STORMWATER MANAGEMENT
REVEGETATION & SOIL AMENDMENTS | SEDIMENT CONTROL | HARDSCAPES**